

Are you ready for the nature bingo challenge? Find all 16 objects on a bingo sheet to get a full house and win some points. **10 points!**

There are bingo sheets for each season and for places like the seashore too. Use our Anytime Anywhere bingo cards at any time of year. They contain 16 words for you to use as inspiration as you explore the natural world around you.

Take a photo of the object, leaving things as you found them afterwards, and once you have captured them all, why not make a montage of your finds? Share these with us via Twitter @CardiffCurator.

For learners, we've included the Welsh language bingo sheets on the same page. Look out for more Welsh nature names on our hints and help pages.

Find more nature guides or get in touch with our museum scientists for help with identification: [museum.wales/collections/on-your-doorstep](http://museum.wales/collections/on-your-doorstep)

## 1 Gwanwyn – Spring 10 points

Eiddew	Llygad y dydd	Blodyn menyn	Dail dant y llew
Chwilen	Gwlithen	Malwen	Gwenynen
Glöyn byw	Buwch goch gota	Meillionen	Mwyalchen
Siani flewog	Poer y gwcw	Robin goch	Mwydyn

Ivy	Daisy	Buttercup	Dandelion leaf
Beetle	Slug	Snail	Bee
Butterfly	Ladybird	Clover	Blackbird
Caterpillar	Cuckoo spit	Robin	Worm

## 2 Hâf – Summer 5 points

Aderyn to	Dail derw	Hadau sycamorwydden	Danadl poethion
Wiwer	Ysgall	Bysedd y cŵn	Pry tarian
Pry lludw	Gwyfyn	Rhedyn	Corryn
Jac y neidiwr	Morghug	Mwsog	Blodyn drain

Sparrow	Oak leaf	Sycamore seed	Nettle
Squirrel	Thistle	Fox glove	Shield bug
Woodlouse	Moth	Fern	Spider
Himalayan balsam	Ant	Moss	Bramble flower

### 3 Hâf – Summer 5 points

Cynffon las	Gwenyn meirch	Cacwn	Clymog Japan
Gwair	Chwilen	Helyglys hardd	Pabi
Pry clustiau	Aeron crafol	Malwen	Pioden
Glöyn byw	Mwydyn	Pry	Colomen

Butterfly Bush	Wasp	Bumblebee	Japanese Knotweed
Grasses	Beetle	Rosebay Willowherb	Poppy
Earwig	Rowan berries	Snail	Magpie
Butterfly	Worm	Fly	Pigeon

### 4 Hâf – Summer 5 points

Lleuad	Jac-do	Pen pabi	Mwyar duon
Caws llyffant	Boncyff bedwen	Pry teiliwr	Gwe pry cop
Dail tafol	Cnau cyll	Gwlithen	Pry lludw
Gwyfyn	Gwylan	Dail celyn	Dail castanwydden y meirch

Moon	Jackdaw	Poppy seed head	Blackberry
Toadstool	Birch trunk	Cranefly	Spider web
Dock leaf	Hazelnut	Slug	Woodlouse
Moth	Gull	Holly leaf	Horse chestnut leaf

### 5 Hâf – Summer 5 points

Dail mwyar	Neidr gantroed	Aderyn to	Llysiâu'r cryman
Cacwn	Hadau sycamorwydden	Glöyn byw	Aeron ysgawen
Titw mawr	Blodyn meillion	Gwenyn meirch	Dail derw
Morghrug	Dail dant y llew	Corryn	Aeron crafol

Bramble leaf	Centipede	Sparrow	Scarlet Pimpernel
Bumble bee	Sycamore seed	Butterfly	Elderberries
Great tit	Clover flower	Wasp	Oak leaf
Ant	Dandelion leaf	Spider	Rowan berries

## 6 Hydref – Autumn   10 points

Mesen	Concyr	Deilen goch	Dail crin
Hedyn	Aeron	Hadau <small>Sycamorwydden</small>	Chwilen
Ffwng ysgwydd	Caws llyffant	Turiwr dail	Wiwer
Ffawydden	Gwyddau	Grug	Gwyfyn

Acorn	Conker	Red leaf	Fallen leaves
Seed head	Berries	Sycamore seeds	Beetle
Bracket Fungus	Toadstool	Leaf Miner	Squirrel
Beech tree	Geese	Heather	Moth

## 7 Gaeaf - Winter   50 points

Celyn, Graean Hewl, Wiwer, Mwsogl, Cŵn, Robin Goch, Gwyn, Cyrens Coch, Nythod, Uchelwydd, Machlud Haul, Drudwy, Coeden Nadolig, Coeden Ywen, Iorwg, Ser, Ffyngau, Niwl, Gwe, Bytholwydd, Coeden Onnen, Bonyciff, Barrug, Cnau Castan, Melys

Holly, Road Grit, Squirrel, Moss, Cone, Robin, White, Red Berries, Nest, Mistletoe, Sunset, Starling, Christmas Tree, Yew Tree, Ivy, Stars, Fungi, Mist, Web, Evergreen, Ash Tree, Tree Trunk, Frost, Sweet Chestnut

## 8 Lan y Môr - Seashore   20 points

Pwrs y Fôr-forwyn	Wyau Cregyn Moch	Asgwrn Ystifflog	Gwichiaid
Clustog Fair	Llygad Maharen	Cornwymon	Baw Abwydyn
Carreg Fach	Ffosil	Letysen Fôr	Gwymon Codog Bras
Cranc	Cragen Long	Llyngyren Ddiliau	Seren Fôr

Mermaid's purse	Whelk eggs	Cuttlefish bone	Periwinkle
Thrift	Limpet	Hornwrack	Lugworm cast
Pebble	Fossil	Sea lettuce	Egg Wrack
Crab	Barnacle	Honeycomb worm	Starfish

## 9 Rocks and Fossils

30 points

Sgleiniog	Craciau	Tywodlyd	Cerrig Mân
Brith	Haenau	Llyfn	Wal
Carreg fedd	Brown	Llwyd	Ffossil
Darnau mân	Brau	Crwn	Gwerthfawr

Sparkly	Cracked	Sandy	Pebbly
Mottled	Layered	Polished	Wall
Tombstone	Brown	Grey	Fossil
Fragment	Crumbly	Rounded	Precious

## 10 Anytime, Anywhere

10 points

Cyrn	Pydredd	Cuddliw	Cuddio
Oer	Lliwgar	Unig	Pantiog
Pinc	Gwlanog	Bach	Sych
Cysgod	Bwyd	Creigiog	Garw

Horns	Decaying	Camouflage	Hiding
Cold	Colourful	Alone	Dimpled
Pink	Fluffy	Tiny	Dry
Shadow	Food	Rocky	Rough

## 11 Anytime, Anywhere

10 points

Cysgod	Streipiog	Golau	Porffor
Wedi torri	Tu mewn	Agored	Tal
Llysnafeddog	Isel	Wedi cau	Troellog
Llyfn	Cyflym	Hirgrwn	Troednoeth ym myd natur

Silhouette	Stripy	Light	Purple
Broken	Inside	Open	Tall
Slimy	Down low	Closed	Spiral
Smooth	Fast	Oval	Barefoot in nature

## 12 Anytime, Anywhere 10 points

Gwyn	Garw	Crwn	Tamp
Tonnog	Golau o'r cefn	Smotiog	Dal i dyfu
Gyda'i gilydd	Poenus	Ar lethr	Araf
Cudd	Glas	Caled	Blasus

White	Jagged	Round	Damp
Wavy	Back-lit	Spotty	Growing on
Together	Painful	Sloping	Slow
Undercover	Blue	Hard	Tasty

## 13 Anytime, Anywhere 10 points

Byr	Coch	Ysbrydoliaeth	Tenau
Tywyll	Annisgwyl	Dau liw	Cymryd drosodd
Anwastad	Rheolaidd	Crychiog	Ar y brig
Tu allan	Pâr	Gwyrdd	Hunlun Natur

Short	Red	Inspiration	Thin
Dark	Unexpected	Two tone	Taking over
Bumpy	Regular	Crumpled	On top
Outside	Pair	Green	Nature selfie

## 14 Anytime, Anywhere 10 points

Bachyn	Adref	Troelli	Trawiadol
Adlewyrchiad	Rhwng y craciau	Melyn	Hunlun Natur
Sgleiniog	Wedi cyrlio	Pigog	Yn yr awyr
Golau o'r cefn	Syth	Meddal	O dan

Hooked	Home	Twining together	Impressive
Reflection	Between the cracks	Yellow	Nature Selfie
Shiny	Curled	Spiky	Up High
Back-lit	Straight	Soft	Underneath

### 1 Gwanwyn – Spring



#### Cuckoo Spit

This is made by immature insects called froghoppers.



#### Peacock Butterfly Caterpillar

- A caterpillar (Siani flewog or Lindysen) will one day transform into a glöyn byw, pili-pala, or iâr fach yr hâf!

### 2 Hâf – Summer



#### Himalayan Balsam

Himalayan Balsam was brought to the UK in the 1800s. Unfortunately it crowds out other plants for space, light, nutrients and pollinators.

### 3 Hâf – Summer



#### Rosebay Willowherb



#### Japanese Knotweed

This invasive plant can do damage to buildings and natural habitats. Look for it along rivers, railway lines and on derelict land. Its leaves alternate on zig zag stems.



#### Butterfly Bush

- Butterfly Bush (Buddleia) is known as Cynffon las in Welsh, which translates as Blue Tail. The flower heads look like drooping tails and they can be covered in butterflies.

### 4 Hâf – Summer



**Jackdaw**

Jackdaws are small black crows which can be identified by the distinctive silvery grey sheen on the back of the head and by their pale eyes.



**Birch**

There are two common species of Birch tree in the UK: Silver (pictured) and Downy. Look out for catkins.



**Toadstool**

🗨 Toadstool is Caws Llyffant in Welsh, which means toad cheese! The name of this species is also food-related – Torth Felen (yellow loaf) – but it's actually poisonous!

### 5 Hâf – Summer



**Scarlet Pimpernell**

You can find Scarlet Pimpernell on sand dunes, in parks and gardens, and arable fields. Its small red flowers close in dull weather, giving it its other name of Shepherd's Weatherglass.



**Centipede**

🗨 In Welsh, Centipede is 'Neidr gantroed' or snake with 100 feet!

## 6 Hydref – Autumn



### Leaf Miner

The larvae (young) of many different insects feed on leaves from the inside. To identify them, look at the plant & patterns they make as they work their way through the leaf.



### Moth

At this time of year, moths can be found that camouflage against the Autumn leaves. Look for wings shaped like leaves. Look for fiery reds, oranges and yellows.



### Fungi

Beech woodlands of south east Wales are also a great place to look for fungi at this time of year.

## 7 Gaeaf - Winter



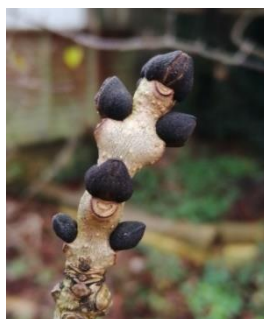
### Nest

Winter is a great time of year to spot nests such as those built by squirrels (drays) or rooks (rookeries). They become more obvious once the leaves start to fall.



### Ash tree

Ash trees lose their leaves in winter but can still be recognised by their black leaf buds. In spring these open to reveal new leaves.



### Road grit

Grit is rock salt (sodium chloride crystals) derived from evaporated seawater, similar to salt we may put on our Christmas dinners!



### 8 Lan y Môr - Seashore



### 9 Rocks and Fossils



#### Fragments

Many limestones contain abundant fossil 'fragments'. This cobble is jam-packed with the fragments of sea lilies (crinoids).

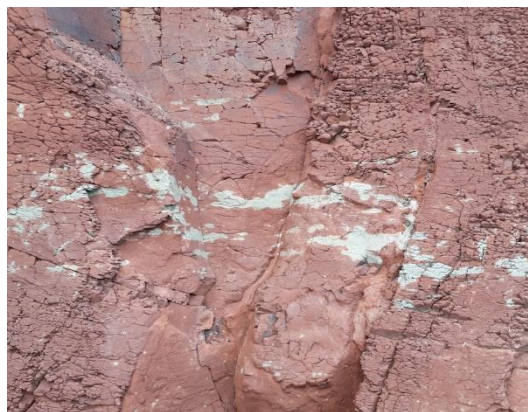
#### Thrift

Thrift is called Clustog Fair in Welsh, or Mary's Pillow. The plants grow in small mounds that look like cushions.

#### Hornwrack

Hornwrack may look like seaweed but it is actually a bryozoan moss animal! They are made up of a colony of tiny individuals called zooids, which you may be able to see using a magnifying glass. Find pieces washed ashore on the strandline.

### 9 Rocks and Fossils



#### Layered

The Lavernock cliffs have layers ('beds') that show differences in the size and composition of the grains which make up the sedimentary rocks. What can you find to represent layered?

#### Pebbly

This sandstone pebble is an example of 'layered' with fine layers of quartz grains in between layers of iron-rich grains.

#### Mottled

Mottled is 'Brith' in Welsh. You may have come across this word before: Bara Brith = mottled bread!