

Amgueddfa Cymru - National Museum Wales



# Preparing for the Global Citizenship Mini Challenge



# PREPARING YOUR PERSONAL STANDPOINT AND RAISING AWARENESS ACTIVITY

---

These activities will help you to prepare for the Mini Challenge. They are designed to be used with the associated Source Pack.

You are challenged to prepare a **Personal Standpoint** and **Raising Awareness** activity on the issue of **Living Sustainably**. Your **Personal Standpoint** must include:

- Information on the political, economic, social, technological, legal and environmental aspects (**PESTLE**) of the issue
- Your personal views about the issue of **Living Sustainably**, commenting on the **credibility or reliability** of sources you refer to

# THE IMPACT OF THE DEVELOPMENT OF INDUSTRY ON THE WELSH LANDSCAPE AND PEOPLE

## ACTIVITY 1: ANALYSING SOURCES

You will know from your history lessons how important it is to be able to analyse sources and to extract information from them. You must demonstrate that you can analyse sources effectively when producing your personal standpoint. When analysing sources it is also very important to consider how credible or reliable the sources are and to what extent you can trust the information contained in them.

We can learn a lot about the past and present from paintings and photographs. However, it is just as important to assess the reliability of paintings and photographs as it is of written evidence. In your opinion do photographs or paintings provide the best evidence of a current or past place or event? Discuss this with your teacher.

1. Study Source 1. How would you describe the landscape shown in these paintings? What evidence is there of humans changing the environment?
2. Study Sources 2, 3 and 6. What evidence is there in these sources of the way industry has changed the Welsh landscape?
3. Study Sources 5 and 6. What do these sources tell us about the impact of industrial development on people?
4. Study the paintings by Lionel Walden, Sources 4 and 5. What do these paintings tell us about the development of industry in Cardiff?
5. Use the table to make a detailed analysis of the reliability of any one of the paintings.

## ACTIVITY 1 *continued*

Start by doing some research of your own on the time and place depicted in the painting you choose. This will help you to assess how accurate and reliable this interpretation of the place and time shown by artist is.

You could find useful information in a book or even better some written or visual sources from the time and place shown in your painting.

Use the table to record your findings.

|   |  |
|---|--|
| <b>Summary of what the painting shows</b>                       | What did the artist show and what do you think the artist thought about their subject?   |
| <b>Source(s) of information found about this time and place</b> | What sources of information did you find and why were these reliable?                    |
| <b>Information found about this time and place</b>              | Does the information you found agree with the artist's portrayal of this time and place? |

## ACTIVITY 1 *continued*

Now consider the artist and their interpretation of this scene.  
Use the table below to record your findings.

What did the artist show and what do you think the artist  
thought about their subject?

|  |  |
|--|--|
| <b>Did the artist witness this scene for themselves?</b>   |  |
| <b>Did the artist try to show things accurately and is this a useful interpretation of what this time and place were like?</b> |  |
| <b>What did the artist think about their subject?</b>  |  |
| <b>Was the artist trying to get across a particular viewpoint?</b>   |  |

## ACTIVITY 2: UNDERSTANDING AND USING PESTLE

This activity will help you to learn to identify the political, economic, social, technological and environmental (PESTLE) aspects of this issue.

Study paintings and photographs (Sources 1-6) in the Source Pack. Complete the table below by stating in the right-hand column how the photographs or paintings show things that relate to each of the PESTLE factors.

| PESTLE                     | DEFINITION  | EXAMPLES FROM SOURCE PACK |
|----------------------------|---|---------------------------|
| <b>POLITICAL AND LEGAL</b> | The need for the government to pass laws to protect the environment |                           |
| <b>ECONOMIC</b>            | Ways shown of making money and boosting the economy                 |                           |

## ACTIVITY 2

| PESTLE               | DEFINITION                               | EXAMPLES FROM SOURCE PACK |
|----------------------|--|---------------------------|
| <b>SOCIAL</b>        | Living and working conditions of people. |                           |
| <b>TECHNOLOGICAL</b> | Industrial sites and equipment           |                           |
| <b>ENVIRONMENTAL</b> | Impact of industry on the landscape      |                           |

# THE IMPACT OF LITTER ON THE WORLD'S OCEANS, COASTLINE AND WILDLIFE

## ACTIVITY 3: ANALYSING SOURCES

You will know from your history lessons how important it is to be able to analyse sources and to extract information from them. You must demonstrate that you can analyse sources effectively when producing your Personal Standpoint. When analysing sources it is also very important to consider how credible or reliable the sources are and to what extent you can trust the information contained in them.

Study the sources in the pack relating to the impact of litter on the world's oceans, coastline and wildlife and answer the following questions:

1. Study Source 1. In what ways were humans to blame for what happened to the leatherback turtle?
2. Study Sources 2 and 3. To what extent would the kind of litter found on the Welsh coastline be similar to the litter found on the coast in the far eastern country of the Philippines? What differences could there be?
3. Study Sources 4-7. Create an information poster to highlight the impact of litter on marine life
4. State three reasons why it would be difficult to implement the recommendations in the United Nations report in Source 8
5. According to the Marine Conservation Society report in Source 9, the problem of litter on Welsh beaches in 2014 was worse than ever. State some facts from the report that support this view. Lesley Jones of the organization Keep Wales Tidy did not agree that Welsh beach litter was worse than ever. State some reasons why.



## ACTIVITY 3 *continued*

Use the table below to help write a detailed analysis of the reliability of a source.

|  |  |
|--|--|
| <b>How useful is the source?</b>                     | Choose a source and write a summary of the information and views put forward   |
| <b>What reasons are there to believe the source?</b> | What makes this a believable and reliable source? Is it a respected organisation, which should know the facts? Are the facts and views it gives based on experts or reliable eye-witnesses? Is this evidence in agreement with other reliable sources? |
| <b>Are there any reasons to doubt the source?</b>    | Could the source or parts of it be unreliable? Could they be biased? Do other reliable sources tend to support or disagree with them?  |

## ACTIVITY 4: UNDERSTANDING AND USING PESTLE

This activity will help you to learn to identify the political, economic, social, technological and environmental (PESTLE) aspects of this issue.

Study the sources about the Impact of Litter on the World's Oceans, Coastline and Wildlife. Complete the table below by stating in the right-hand column information from these sources that relates to each of the PESTLE factors.

| PESTLE           | DEFINITION   | EXAMPLES FROM SOURCE PACK |
|------------------|--|---------------------------|
| <b>POLITICAL</b> | The views and actions of the United Nations, governments and politicians |                           |
| <b>ECONOMIC</b>  | The influence and impact of business and making money on the issue       |                           |

## ACTIVITY 4

| <b>PESTLE</b>        | <b>DEFINITION</b>   | <b>EXAMPLES FROM SOURCE PACK</b> |
|----------------------|---|----------------------------------|
| <b>SOCIAL</b>        | The views, actions and impact of the issue on the lives of people |                                  |
| <b>TECHNOLOGICAL</b> | The use and impact of technology on the issue                     |                                  |
| <b>LEGAL</b>         | The need for countries to introduce laws to deal with the issue   |                                  |
| <b>ENVIRONMENTAL</b> | The impact of the issue on the environment                        |                                  |

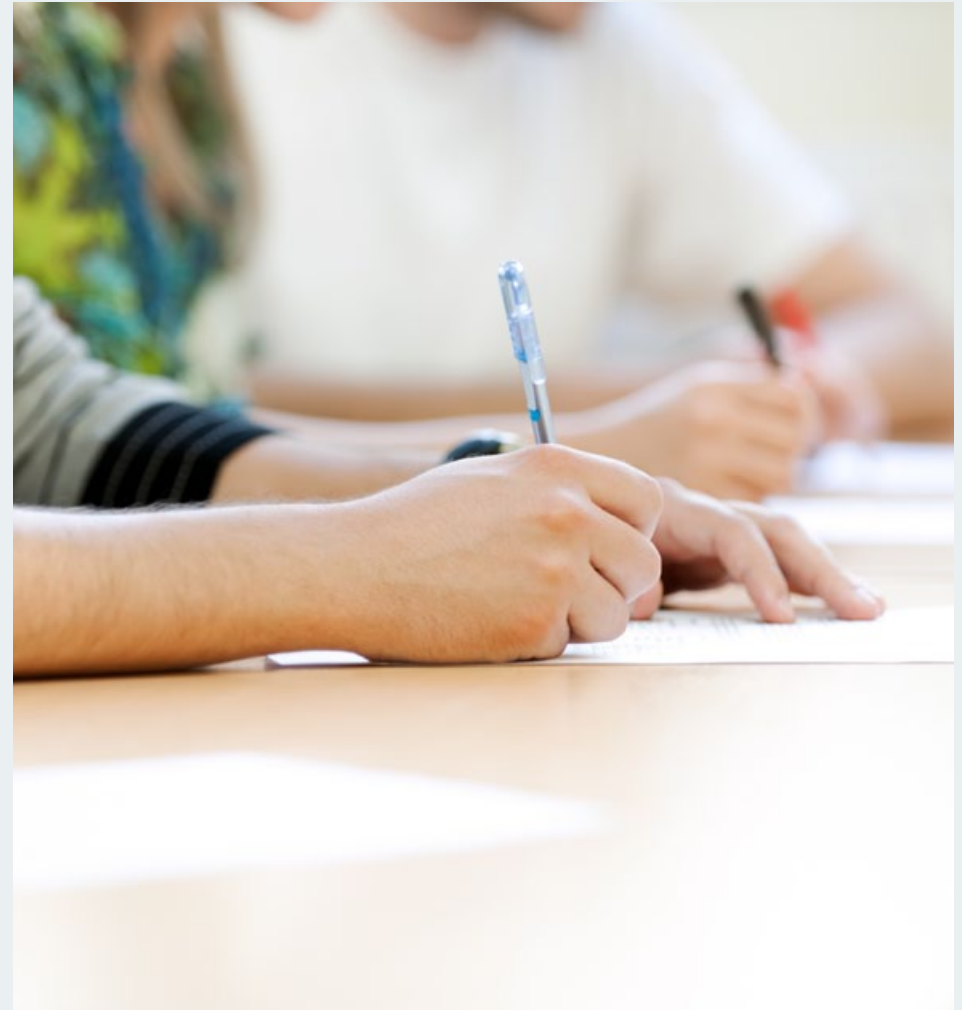
## ACTIVITY 5: WRITING A PERSONAL STANDPOINT

Prepare a personal standpoint on the issue of either:

- The Impact of Industry on the Environment in Wales or
- The Impact of Litter on the World's Oceans, Coastline and Wildlife

You may draw on any of the information or sources you have studied. Remember to include:

- 
- Information on the political, economic, social, technological, legal and environmental (**PESTLE**) aspects of the issue
  - Your personal views about the issue of **Living Sustainably**
- 



## ACTIVITY 5 *continued*

### Possible Plan:

Start by making some notes from the sources. Find information and write about:

- Industry – The impact of industry on the Welsh landscape and people, as a result of the Industrial Revolution and the impact of the development of industry since. What we can learn about living sustainably from these developments?

Or

- Litter – Starting with Wales, the impact of litter on the world's coastlines, oceans and wildlife, the extent of the problem, who is to blame and what should be done about it.

## IMPORTANT!

- » Comment on the reliability of the sources and how far you can trust the information in them
- » Make sure you refer to each of the PESTLE factors i.e. political, economic, social, technological, legal and environmental aspects of the issue

Now using your notes, write a Personal Statement (3-4 sides of A4) on the issue of living sustainably.

## ACTIVITY 6: RAISING AWARENESS ACTIVITY

Develop and implement as an individual or a team (consisting of 3-6 members) a Raising Awareness activity for younger students. Focus on one of the issues about living sustainably you have studied.

Produce your ideas for a **Raising Awareness Pack** including evidence demonstrating:

- how you came up with your ideas for **Raising Awareness**
- how and why you selected the best idea
- your plans for how the idea could be developed and carried out
- details of any appropriate problem solving and decision making techniques that you will need to learn, develop and use
- the materials and resources you will need

A visit to National Museum Cardiff or any other Amgueddfa Cymru museums will give you an excellent idea of how museums raise awareness of issues through their use resources and the way they present the past.





## AMGUEDDFA CYMRU GLOBAL CITIZENSHIP MINI CHALLENGE

You are challenged to explore the issue of **Living Sustainably** in the modern world.

In preparation for this Mini Challenge you have studied sources and visited museums. You have studied the Impact of Industry on the Welsh landscape and People and the Impact of Litter on the World's Coastlines, Oceans and Wildlife. You have developed a good understanding of the issue of Living Sustainably. You are now ready to complete the Amgueddfa Cymru Global Citizenship Mini Challenge by exploring this issue through similar topics and countries in the modern world.