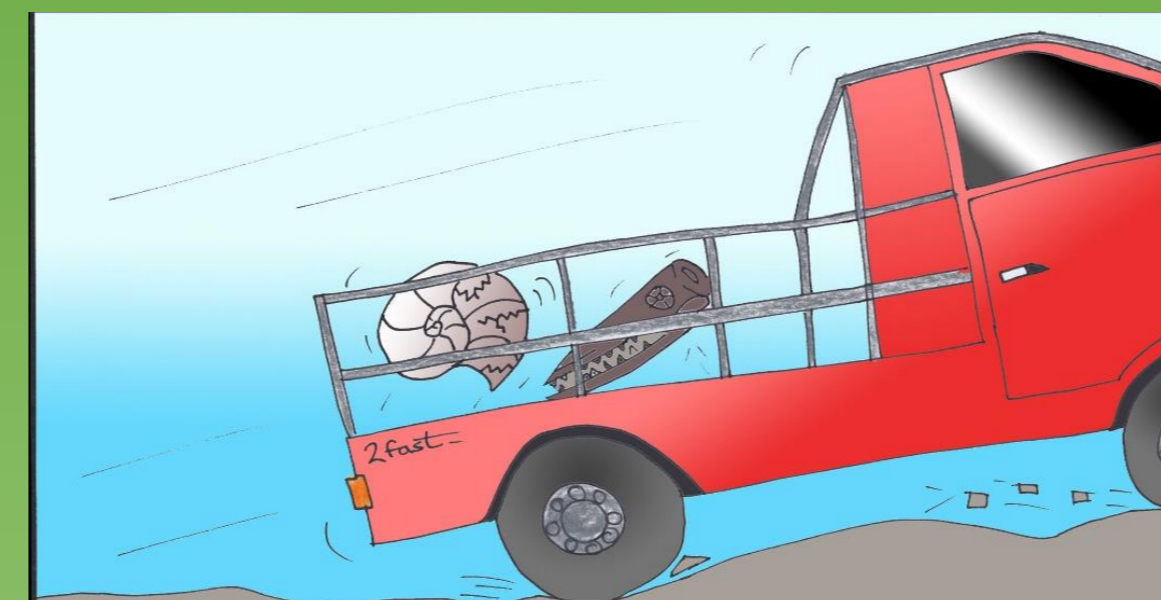


The rocks are pushed up,  
and worn away by water and wind.  
+1



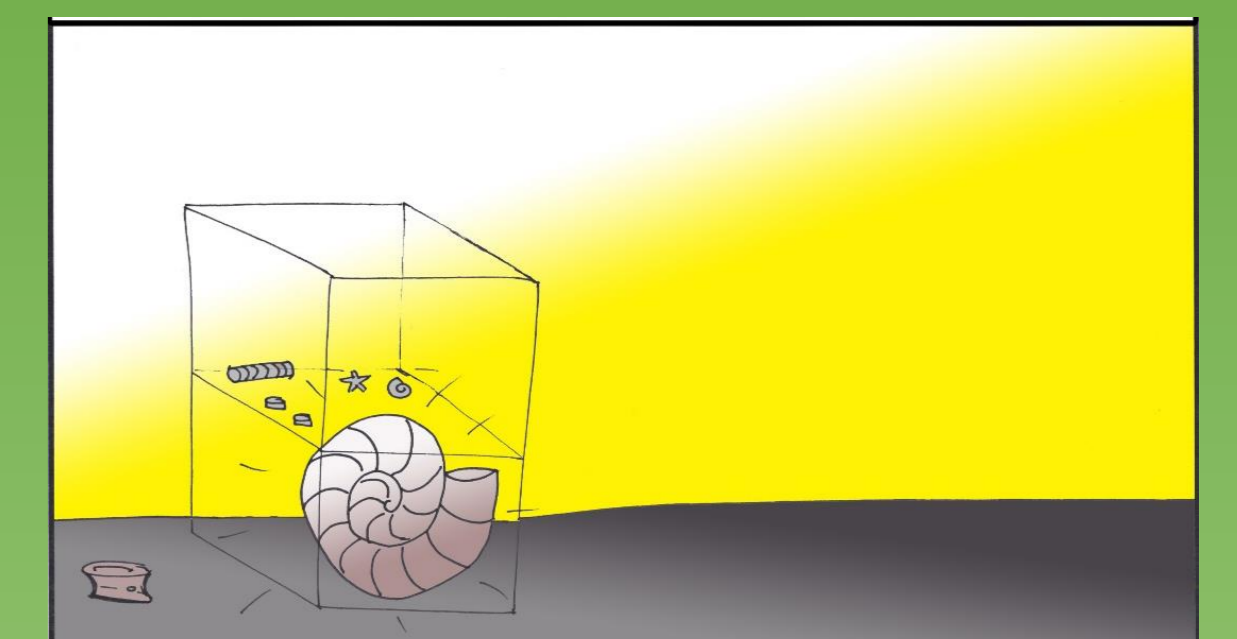
A collector finds the fossil!  
Roll again.



Oops! It's fragile and needs repair.  
-1

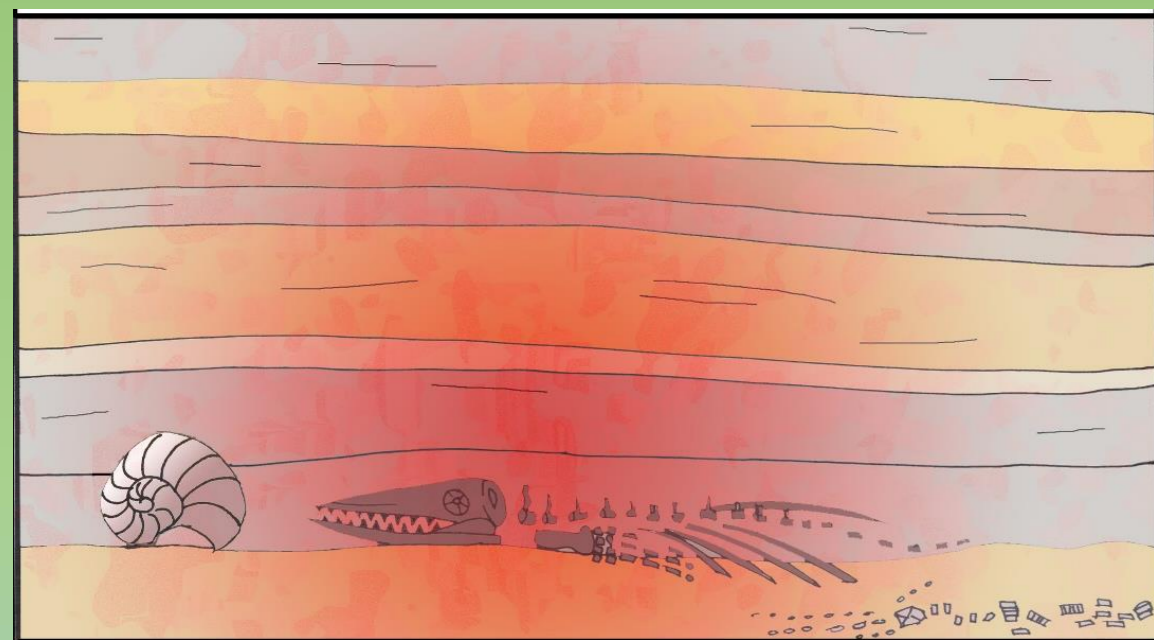


Oh no, the collector didn't say  
where it was from.  
-2



Congratulations here it is!

# FOSSILIZATION FRENZY!



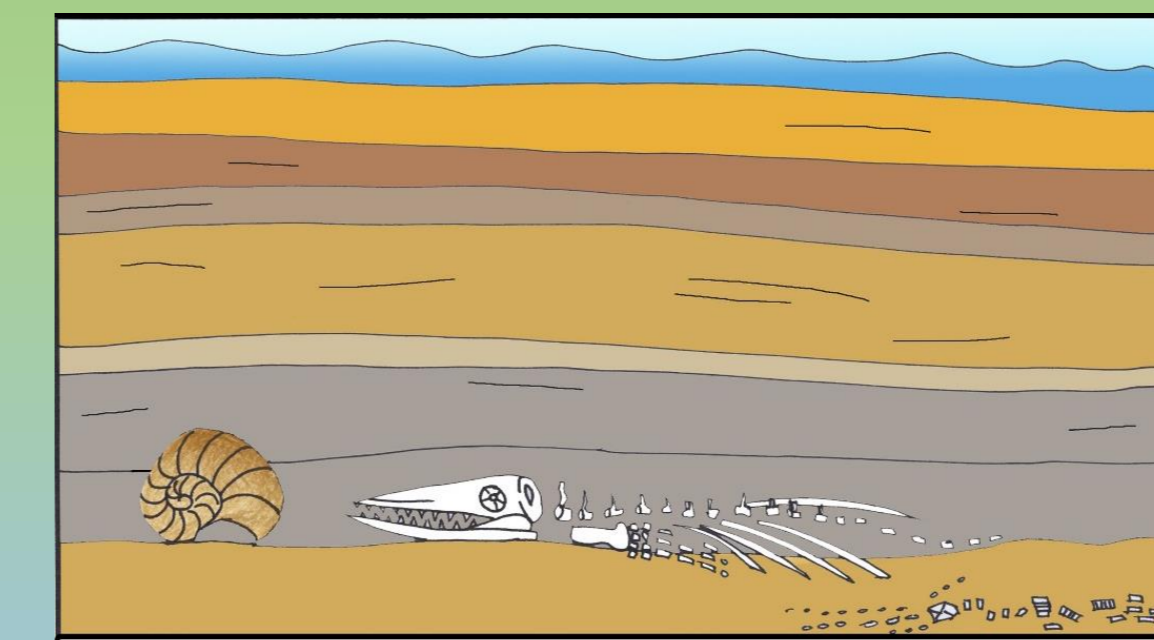
Deeply buried in rock, it gets hot.  
Roll 1 or 2: destroyed.  
Roll 3: only squashed, +1.



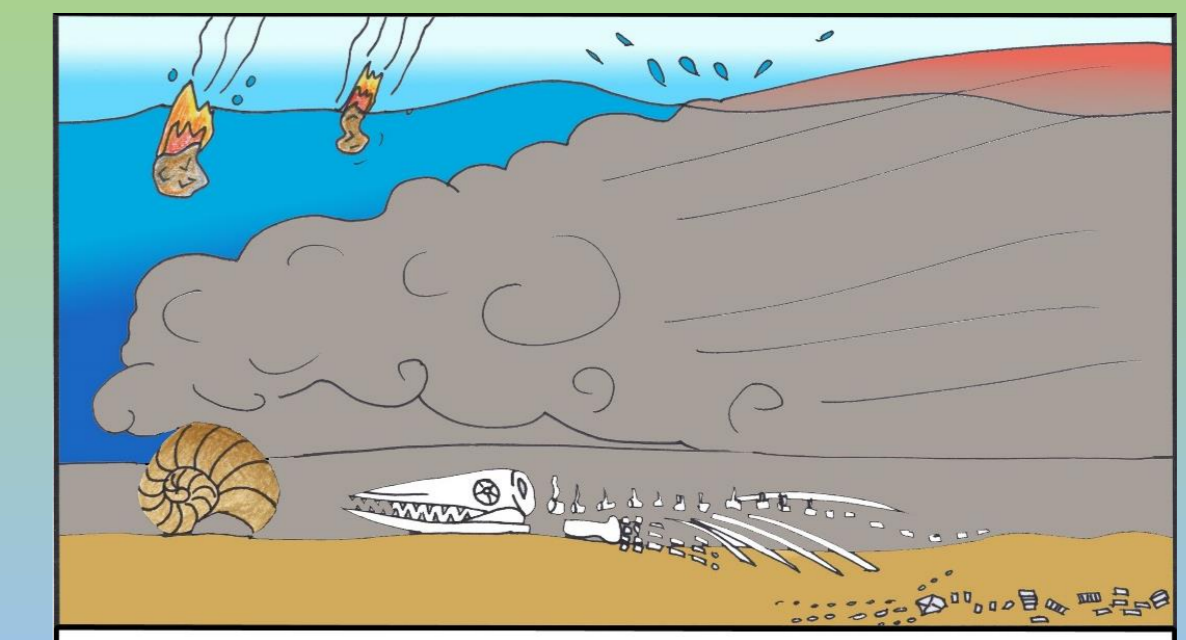
The hard parts dissolve,  
but leave their shape behind.  
+2



Parts of the animal are replaced with  
new minerals.  
+3



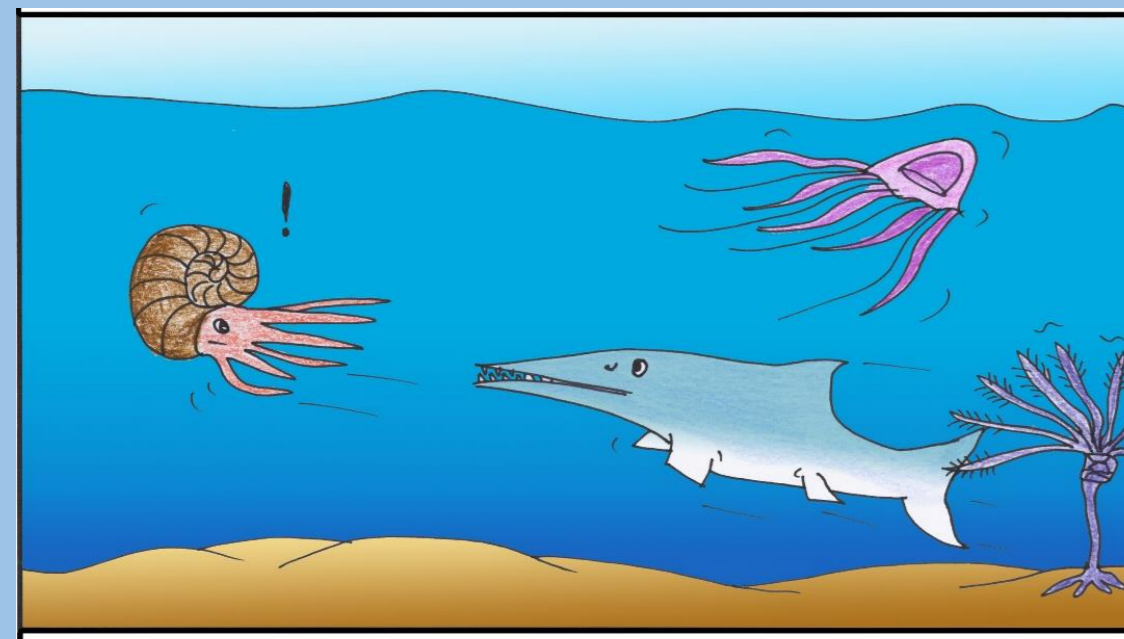
Time passes.  
Mud hardens to rock.  
Roll again.



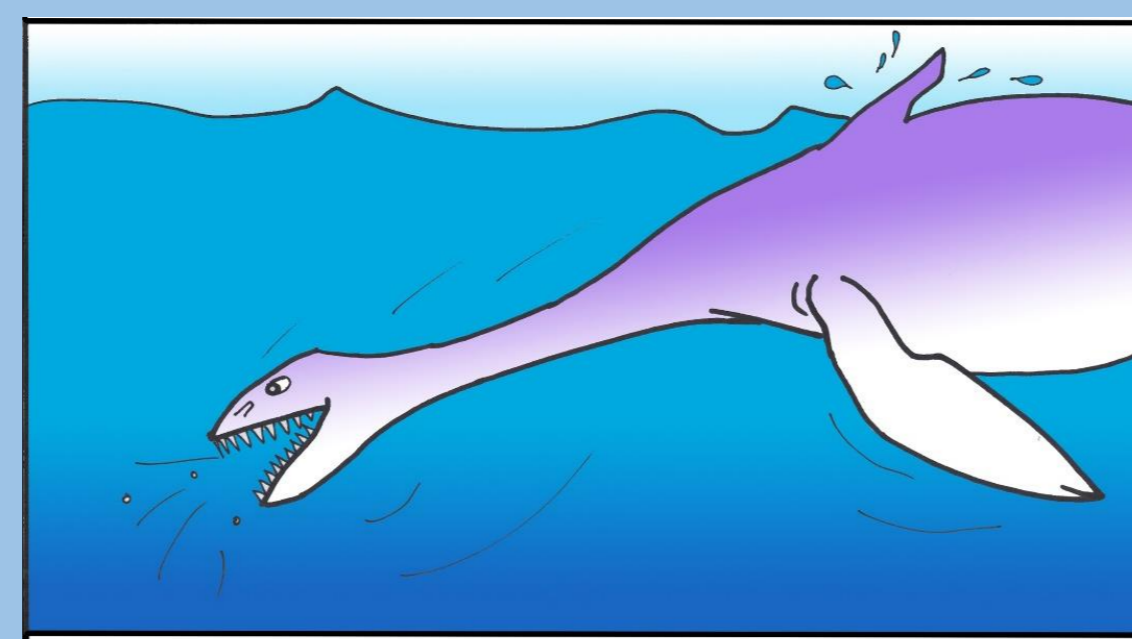
Earthquake and volcano!  
It's buried quickly by a mudslide and ash.  
+1

# FOSSILIZATION FRENZY!

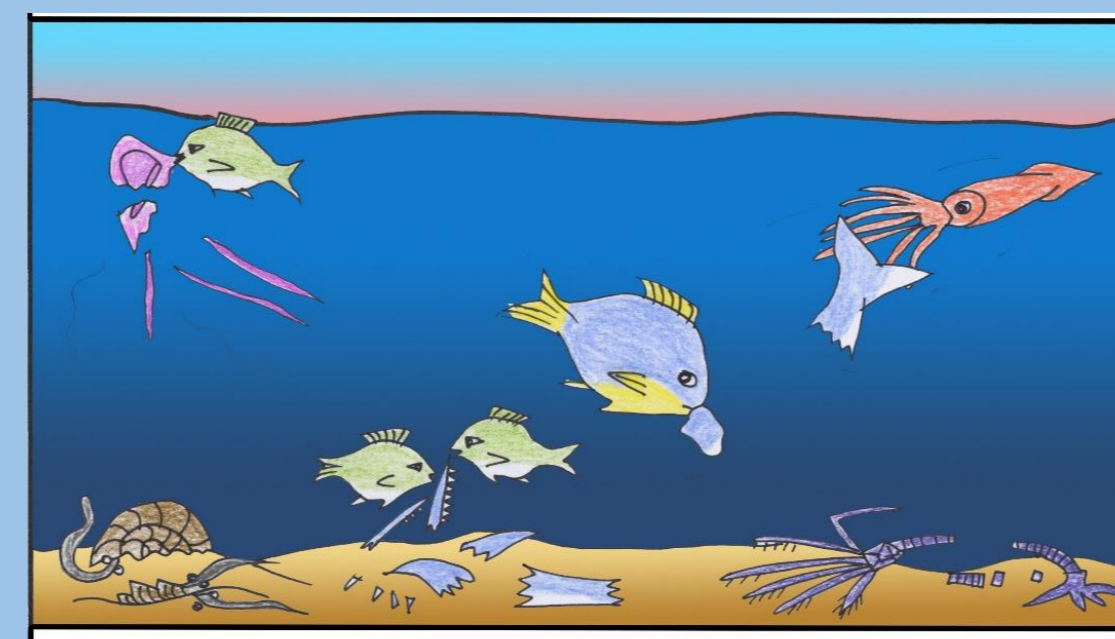
Start here!



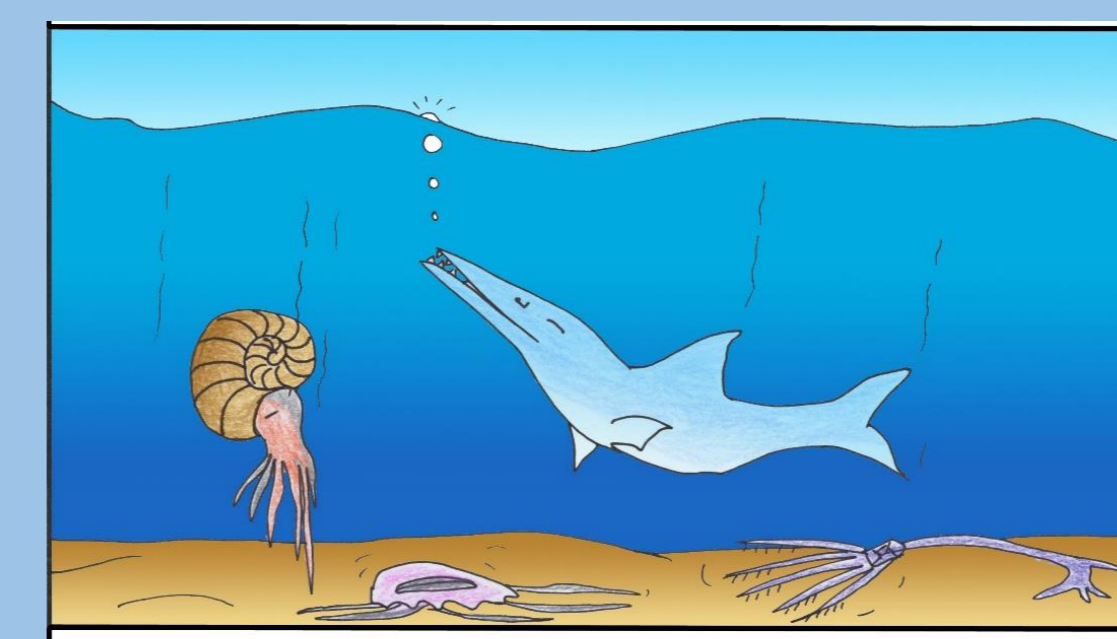
200 Million years ago in the Jurassic...  
Can your animal make it into the museum?



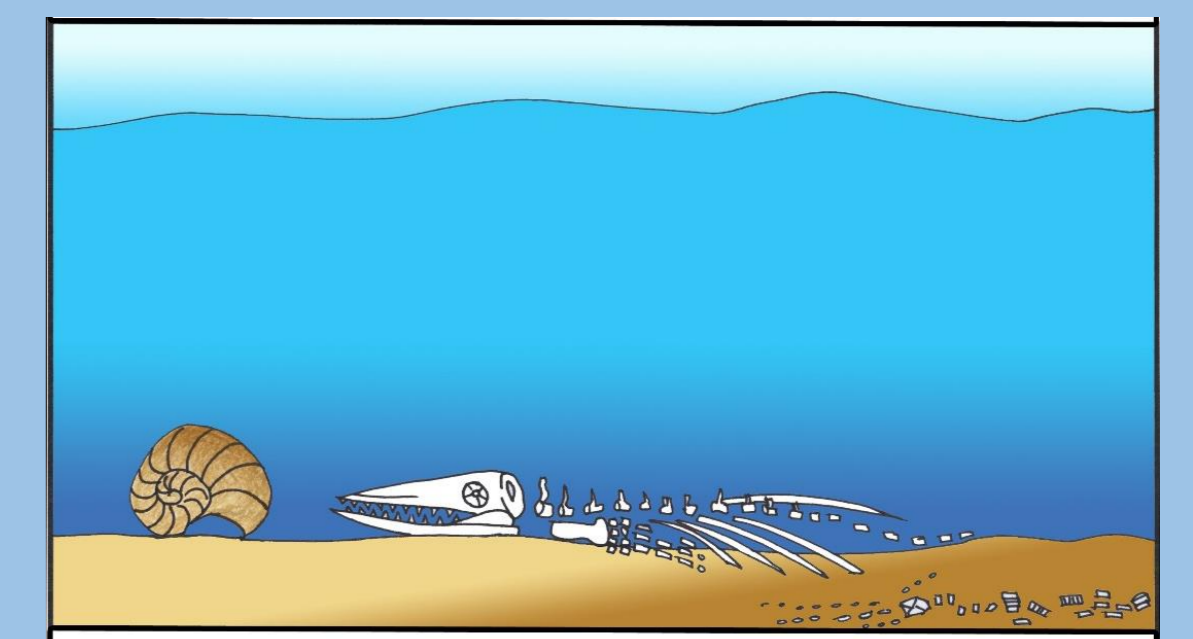
Oh no! It's lunch!  
Go back to start



It's dead but gets pulled to pieces.  
Go back to start



It dies and sinks to the sea floor.  
A good start!  
Roll 1 or 2: +1. Roll 3: +2



Does it have hard parts?  
Yes: +2  
No: Not quickly buried and rots away.