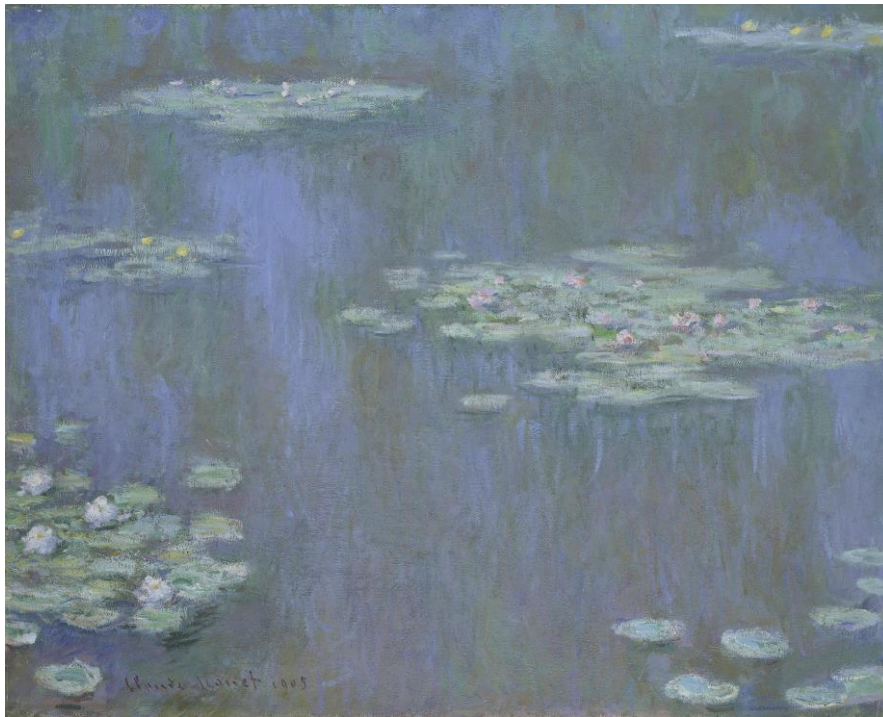


Be inspired by Claude Monet's waterlilies



You will need

- A paper plate or circle of paper or card
- Cupcake cases
- Paint
- Glue

Instructions:

1. Create your background by applying paint to your plate. Try some finger painting! Monet used white, yellow, blues, greens and red.

Messy Monet

2. Next, flatten some cupcake cases and paint them in your favourite waterlily shades of green.



3. Place your waterlilies on your plate pond. You could also decorate the inside of the flowers with tissue paper.

