

AMGUEDDFA CYMRU

ESOL Entry 1

Fron Haul



National Slate Museum

amgueddfa.cymru
museum.wales

About Amgueddfa Cymru

Amgueddfa Cymru – Museum Wales is a charity, and a family of seven national museums and one collections centre located across Wales. But we're more than our buildings. Our sites are vital community spaces that reach far beyond their location on a map. Our aim is to inspire everyone we reach through Wales's story and we recognise that everyone has something to contribute through our museums, collections and the work we do.



ESOL Entry 1

Fron Haul Quarrymen's Houses

National Slate Museum



Introduction

The National Slate Museum is in Llanberis, in North Wales. Here you can learn about slate and see how people lived. There are some houses called Fron Haul. The houses were in a different village, Tanygrisiau near Blaenau Ffestiniog. They built the houses again in Llanberis. Now you can see life in the past.

1. What are the houses called? F _____ H _____ .
2. Where were they in the past? T _____.

House Number 3 – life in 1861

The house is small. The furniture is dark and wooden. They have work and money so there is lots of food on the table. They cook on an open fire. There is one bedroom for all the family.

1. Where do they cook?
2. How many bedrooms are there?
3. Underline three adjectives (describing words)

Look at the picture and make sentences. Use *There is ...* or *There are*.



Living room at number 3 Fron Haul



Bedroom at number 3 Fron Haul

There _____ a fire.

There _____ one bedroom.

There _____ one bed.

There _____ a curtain.

There _____ some plates.

There _____ some pots and pans.

There _____ a candle.

House Number 2 – 1901

The house is small but upstairs there are two bedrooms. One bedroom is very small. The workers want more money, so they stop work. They don't like the men who go back to work. They call them nasty names. Life is very difficult. There is not much food, only bread. Sometimes they grow vegetables in the garden.

1. How many bedrooms are there?
2. Do they have a lot of food?
3. Underline three adjectives (describing words)

Look at the pictures and make sentences.



Living room at number 2 Fron Haul



Garden at number 2 Fron Haul



Bedroom at number 2 Fron Haul



There is _____ on the table.



There is a _____ in the bedroom.



There is a _____ in the window.



There are _____ in the garden.

House Number 1 – Llanberis 1969

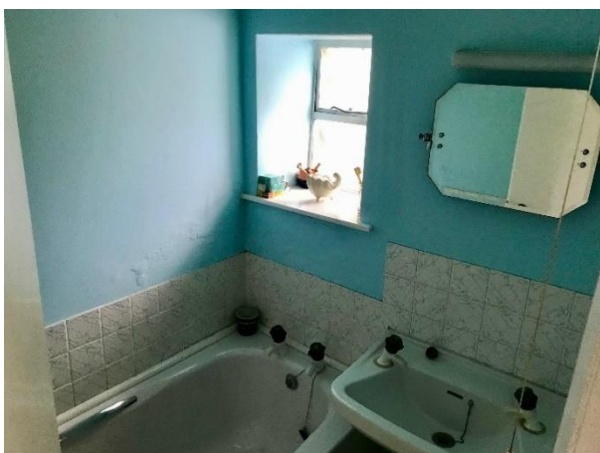
Number 1 Fron Haul shows you Llanberis in 1969. Now they have electricity and can have a television, lighting and even a record player. The furniture is more comfortable. They don't cook on an open fire. They have a cooker. There is a bath and a toilet in this house!

1. Where do they cook?
2. Where do they wash?
3. Which things need electricity?

Look at the pictures and make sentences.



Living room at number 1 Fron Haul



Bathroom at number 1 Fron Haul



Bedroom at number 1 Fron Haul

There is an _____ fire.

There _____ a television.

There _____ books and games.

There _____ a sofa.

There _____ a carpet.

Read the sentences.

Which house is it? 1, 2 or 3 Fron Haul?

Circle the correct answer.

| | | | |
|---|---|---|---|
| There is only one bedroom for the whole family. | 1 | 2 | 3 |
| There is a toilet and bathroom indoors. | 1 | 2 | 3 |
| There is lots of food. | 1 | 2 | 3 |
| They have electricity. | 1 | 2 | 3 |
| They cook on a fire. | 1 | 2 | 3 |
| They grow vegetables in the garden. | 1 | 2 | 3 |