

Our Museum Dinosaurs

**AMGUEDDFA
CYMRU**



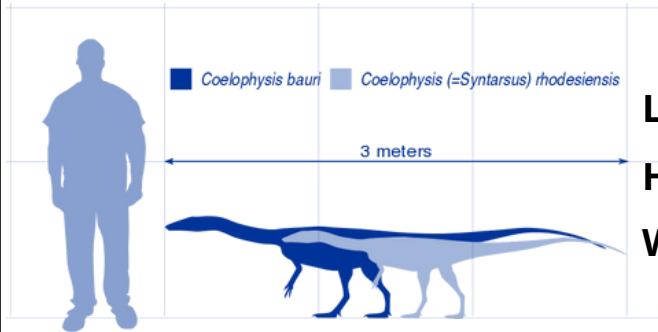
Coelophysis

Means: 'hollow form'

Say it: *seel-oh-FIE-sis*

Where found: USA

Type: Theropod



Length: 3m

Height: 2m

Weight: 27kg

How it moved: swiftly on two legs

Teeth: small and sharp

Type of feeder: CARNIVORE

Food: small reptiles and insects

When it lived: 225-220 million years ago

In the museum

Models of
Coelophysis REAL

fossil footprints



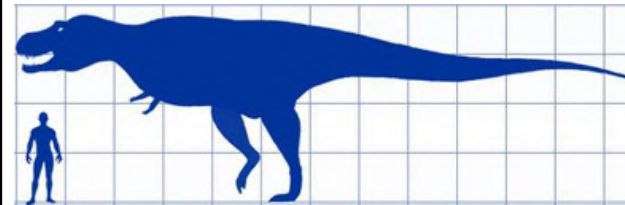
Tyrannosaurus

Means: 'tyrant lizard'

Say it: *tie-ran-oh-SORE-us*

Where found: USA, Canada

Type: Theropod



Length: 12m

Height: 3.6m

Weight: 8,300kg

How it moved: walked on two legs, may have run

Teeth: 60 saw-edged, bone-crushing, pointed teeth in immensely strong jaws

Type of feeder: CARNIVORE + SCAVENGER

Food: all other animals

When it lived: 68-66 million years ago

In the museum

Full size replica of its skull



Polacanthus



Means: 'many prickles'

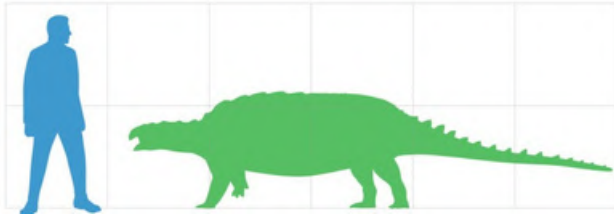
Say it: pole-a-CAN-thus

Where found:

England

Type:

Ankylosaur



Length: 5m

Height: 1m

Weight: 2 tonnes

How it moved: walked on four legs

Teeth: small

Type of feeder: HERBIVORE

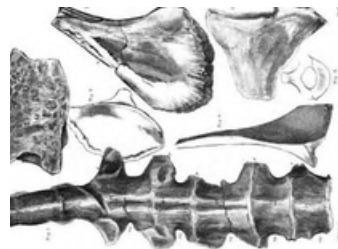
Food: plants

When it lived: 130-125 million years ago

In the museum

Partial skeleton of

Polacanthus (in rock)



Edmontosaurus

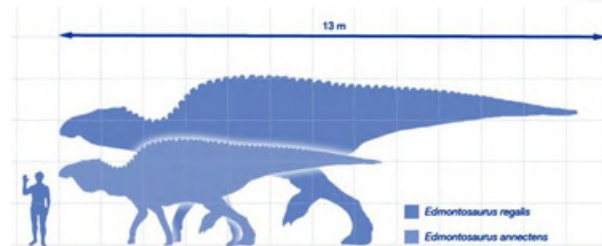


Means: 'Edmonton lizard'

Say it: ed-mon-toe-SORE-us

Where found: North America

Type: Hadrosaur



Length: 13m

Height: 3.5m

Weight: 3,400kg

How it moved: on two or four legs

Teeth: horny beak, 200 grinding cheek teeth

Type of feeder: HERBIVORE

Food: pine needles, seeds, twigs and leaves

When it lived: 73-66 million years ago

In the museum

A REAL *Edmontosaurus* skeleton

Fossil *Edmontosaurus* skin imprint



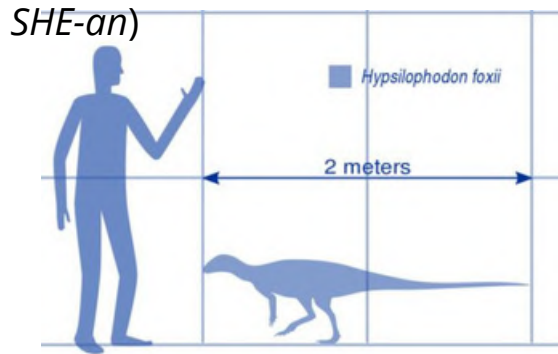
Hypsilophodon



Means: 'high-crested tooth'

Say it: hip-sih-LOW-foh-don

Where found: Isle of Wight, England
Type: Ornithiscian(orn-i-thi-



Length: 1.8m

Height: 0.8m

(80cm) **Weight:**

20kg

How it moved: swiftly on two legs

Teeth: horny beak, c. 45 broad, chisel-like teeth
Type of feeder: HERBIVORE

Food: plants growing close to the ground

When it lived: 130-125 million years ago

In the museum

A replica *Hypsilophodon* skeleton



Dracoraptor



Means: 'dragon robber'

Say it: DRAY-co-RAP-tor

Where found: Wales

Type: Theropod



Length: around 3m

Height: around 1m

Weight: around 25kg

How it moved: walked or ran on two legs
Teeth: small pointed serrated teeth

Type of feeder: CARNIVORE

Food: insects, small reptiles, fish

When it lived: 201 million years ago

In the museum

Fossil skeleton and model

Dracoraptor was one of the most recently discovered dinosaurs in the UK and was described by our staff.



Plateosaurus

Means: 'broad lizard'

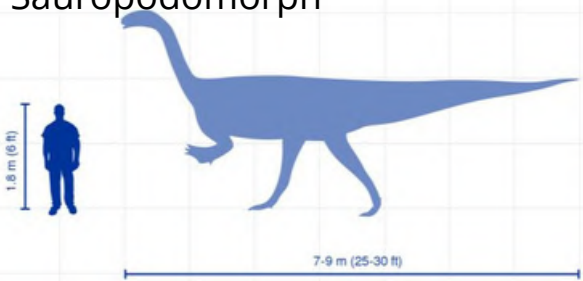
Say it: plat-ee-o-SORE-us

Where found:

Germany

Type:

Sauropodomorph



Length: 6m

Height: 3m

Weight: 2000kg

How it moved: walked on two legs

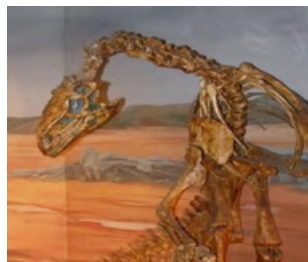
Teeth: many small, leaf-shaped, crushing teeth
Type of feeder: HERBIVORE

Food: plants

When it lived: 214-204 million years ago

In the museum

Plateosaurus skeleton cast



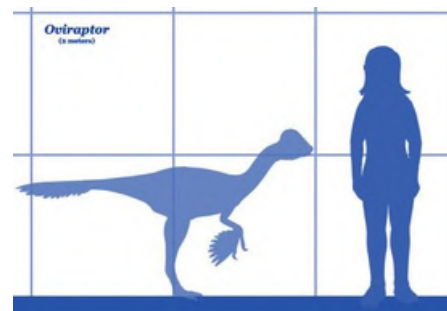
Oviraptor

Means: 'egg thief'

Say it: oh-vee-RAP-tor

Where found: Mongolia

Type: Theropod



Length: 1m

Height: 2m

Weight: 20kg

How it moved: walked on two legs

Teeth: beak, but no teeth

Type of feeder: OMNIVORE

Food: small fish, molluscs, or hard fruit

When it lived: 85-75 million years ago

In the museum

Fossil *Oviraptor* egg

It was first thought to be an egg eater, but their fossils were then discovered sitting on nests, protecting them.

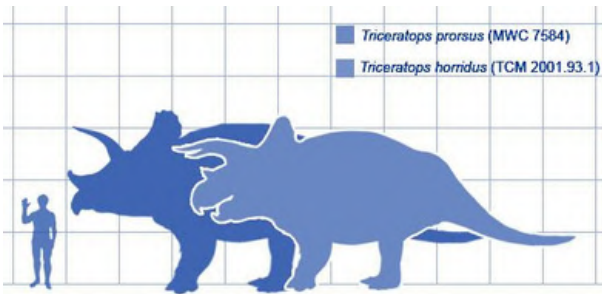


Triceratops

Means: 'three horned face'
Say it: tri-SERA-tops

Where found: USA

Type: Ceratopsian



Length: 8.5m

Height: 3m

Weight: 8,000kg

How it moved: walked slowly on four legs

Teeth: strong narrow beak with ridged back teeth for slicing tough plants

Type of feeder: HERBIVORE

Food: low-growing plants, ferns and cycads

When it lived: 68-66 million years ago

In the museum

Fossil *Triceratops* horn



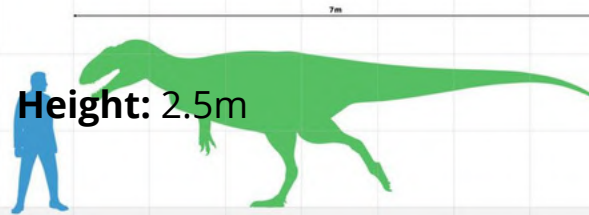
Neovenator

Means: 'new hunter'

Say it: nee-o-ven-a-tor

Where found: England

Type: Theropod



Length: 6m

Height: 2.5m

Weight: 700kg

How it moved: walked and ran on two legs

Teeth: around 70 large curved teeth

Type of feeder: CARNIVORE

Food: smaller dinosaurs

When it lived: 130-125 million years ago

In the museum

Replica skeleton

and REAL footprints

Similar to a dinosaur that lived in Wales 210 million years ago



Archaeopteryx

Means: 'ancient wing'

Say it: ark-ee-OPT-er-ix

Where found: Germany

Type: Theropod



Length: 0.5m (50cm)

Height: 0.2m (20cm)

Weight: 0.6kg
(600g)



How it moved: on 2 legs and by flying

Teeth: many small conical teeth

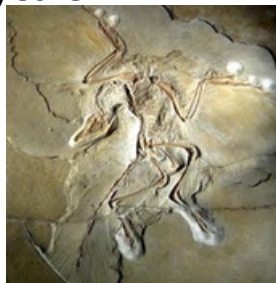
Type of feeder: CARNIVORE/INSECTIVORE

Food: small reptiles, mammals and insects. **When it lived:** 150 million years ago

In the museum

Replica Fossil skeleton

Model of *Archaeopteryx*



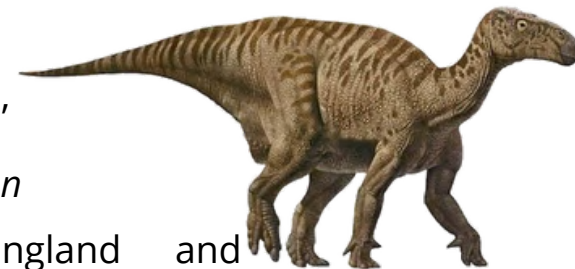
Iguanodon

Means: 'iguana tooth'

Say it: ig-WHA-noh-don

Where found: England and

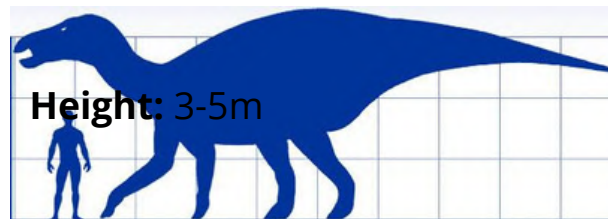
Europe **Type:** Hadrosaur



Length: 10m

Height: 3-5m

Weight: 4,500kg



How it moved: walked slowly on 2 legs & ran fast on 4 legs

Teeth: chisel-shaped teeth and horny beak

Type of feeder: HERBIVORE

Food: plants

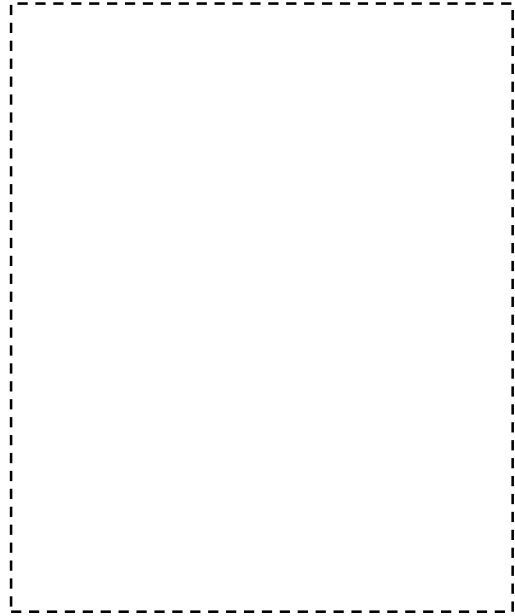
When it lived: 140-110 million years ago

In the museum

Fossil bones



Name:



Means:

Say it:

Where found:

Type:



Length:

Height:

Weight

:

How it

moved: Teeth:

Type of feeder:

Food:

When it lived:

Design your own!