

# 1 Pirate Puzzles

The Pirates have lost 8 letters in the New Gallery. Can you and your crew work in teams to find each letter, unscramble them and reveal the word?

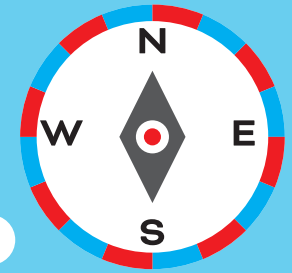
Starting at the stairs, head in a straight line, North, towards the Museum shop. Turn right and walk 10 paces into the New Gallery. The letters are hidden at 8 locations all around this gallery.

Clue: You have 8 red letters to find to reveal the hidden word.

Have you found all the red letters? Write them here:

What is the hidden word?

\_\_\_\_\_



Start Here



Gallery Entrance

Shop

City Entrance

3

4

2 Explore the museum to find the following:

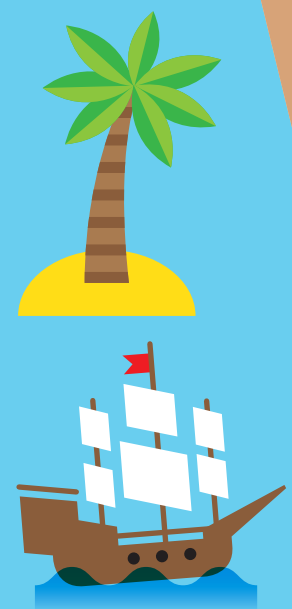
Find and point to these shapes and colours:

Pirates love treasure. Find your own treasure in the museum and draw it here:



- Penydarren Steam Locomotive
- Goose
- Miner's Lamp
- Welsh Gold
- Canon
- Slate

- Red
- Black
- Green
- White
- Square
- Circle
- Triangle
- Diamond



Amgueddfa Genedlaethol y Glannau  
 National Waterfront Museum  
STORI DIWYDIANT A BLAENGAREDD CYMRU WALES' STORY OF INDUSTRY & INNOVATION

