

Amgueddfa
Genedlaethol
y Glannau
STORI DIWYDIANT A
BLAENGAREDD CYMRU

National
Waterfront
Museum
WALES' STORY OF
INDUSTRY & INNOVATION



AMGUEDDFA CYMRU

Visual Story

**A trip to National
Waterfront
Museum, Swansea**



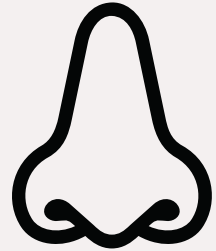
Visual Story

This is a visual guide for learning groups preparing to visit.

It includes useful information for all learners, including those with additional needs.



Symbols used in this guide



This symbol shows when a place has strong smells.



This symbol shows when a place is noisy.



This symbol shows when a place has a change in lighting.



This symbol is used to highlight areas where you can touch objects.



Used to highlight a disabled access point/access information.

If you arrive by coach

There is no coach parking at the museum. Your coach driver can drop off near Swansea Museum on East Burrows Road.

Please use the pavement on the right-hand side of the bus drop off to get to the museum entrance.



Museum Entrances

There are three entrances to the museum. Each entrance leads to the main building foyer. All are flat with automatic or push-button doors.



Cityside Entrance



Colonnade Entrance



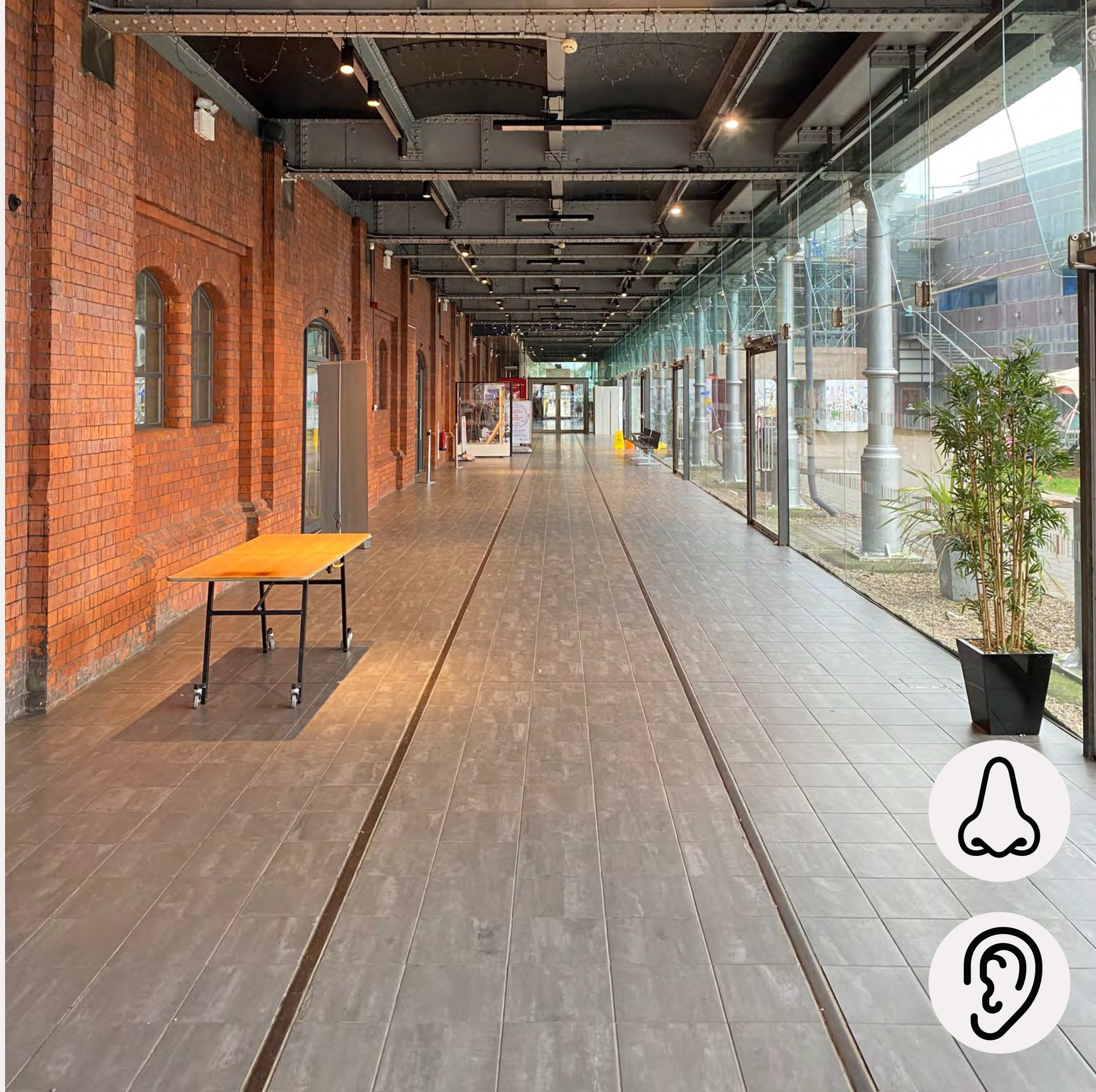
Marina Entrance



Colonnade Gallery

The Colonnade Entrance is the closest entrance to the coach drop off.

When you enter you will see a long corridor, this is the Colonnade Gallery. Sometimes this area will have craft tables or different exhibitions, so it may not look like this when you arrive. The lunchroom and ground floor toilets are here.



In the Building Foyer

The building foyer is where you will find the main reception, gift shop and museum cafe. The space in between the reception and cafe holds all sorts of events and exhibitions and will look different every visit.



Reception



Gift Shop



Museum Cafe



People you will meet

Some staff wear a uniform with the museum logo on it.

They are there to help you have a good visit and answer any questions.



During your visit, you may not meet the exact same people as shown in these pictures.

People you will meet

Some staff may not have a uniform or may be dressed in costume. They may be wearing a pirate outfit and carrying replica objects. They are friendly and will help you learn about how people lived in the past.



During your visit, you may not meet the exact same people as shown in these pictures.

Map of National Waterfront Museum

You can get a map from the main reception desk when you arrive.

There are large maps around the site with directional arrows signposting to the different buildings and galleries.



[To view a digital site map click here](#)

Sensory map and pack

To help you identify sensory-friendly spaces in the museum you can get a Sensory Map and backpack from reception.



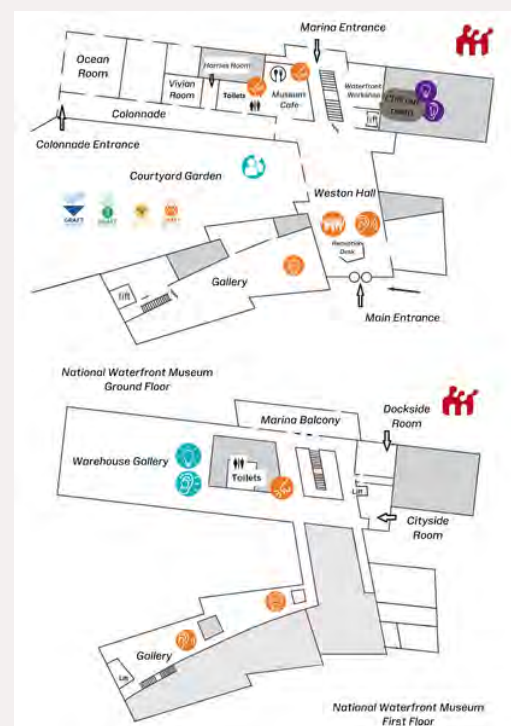
AMGUEDDFA CYMRU
Amgueddfa Genedlaethol y Glannau
National Waterfront Museum
Wales' Story of Industry & Innovation

Sensory map

Welcome to the National Waterfront Museum.
Please find areas of the Museum that are more suited to you.

Sensory symbols

Lighting	Low	Medium	High
Low lighting Dull lighting to protect objects.	Some lighting Some natural and some artificial lighting	Bright lighting A lot of natural or artificial lighting.	
Noise			
A quiet place Very little noise or audio	Some noise Includes video and audio	Can be noisy A good place to use ear defenders	
Crowds			
A quiet place A quiet place with very little crowds	Some crowds Usually not too busy	Can be busy Can be busy spaces	
Smells			
Low level of smells.	Smells carried from other locations	Very strong smells	
Other useful symbols			
	Stairs	Cafe	Toilets
			Lift



National Waterfront Museum Ground Floor

National Waterfront Museum First Floor

The map shows various rooms and areas with sensory symbols placed throughout. Rooms include Ocean Room, Courtyard Garden, Gallery, Warehouse Gallery, Marina Balcony, Dockside Room, Cityside Room, Balconi, and Ystafell Ocean. Entrances include Marina Entrance, Colonnade Entrance, and Main Entrance. Symbols for lighting, noise, crowds, and smells are distributed across the floor plans.



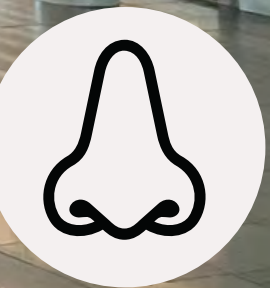
To view the sensory map digitally click here

Getting to the Galleries



There are 15 galleries around the Museum. Most are on the upper floor.

You should use the rainbow-coloured stairs or the lift from building foyer, next to the cafe, to get to the upper floor.

Make your way left to begin exploring the galleries.



Light and Sound

The museum uses light and sound to tell stories. Each gallery you walk into will have different types and colours of light. There will also be sounds of industry, people talking and more. Look out for these   symbols in this visual story.



Some galleries will have colourful low lights and quite sounds.




Some galleries will be darker and louder than others.



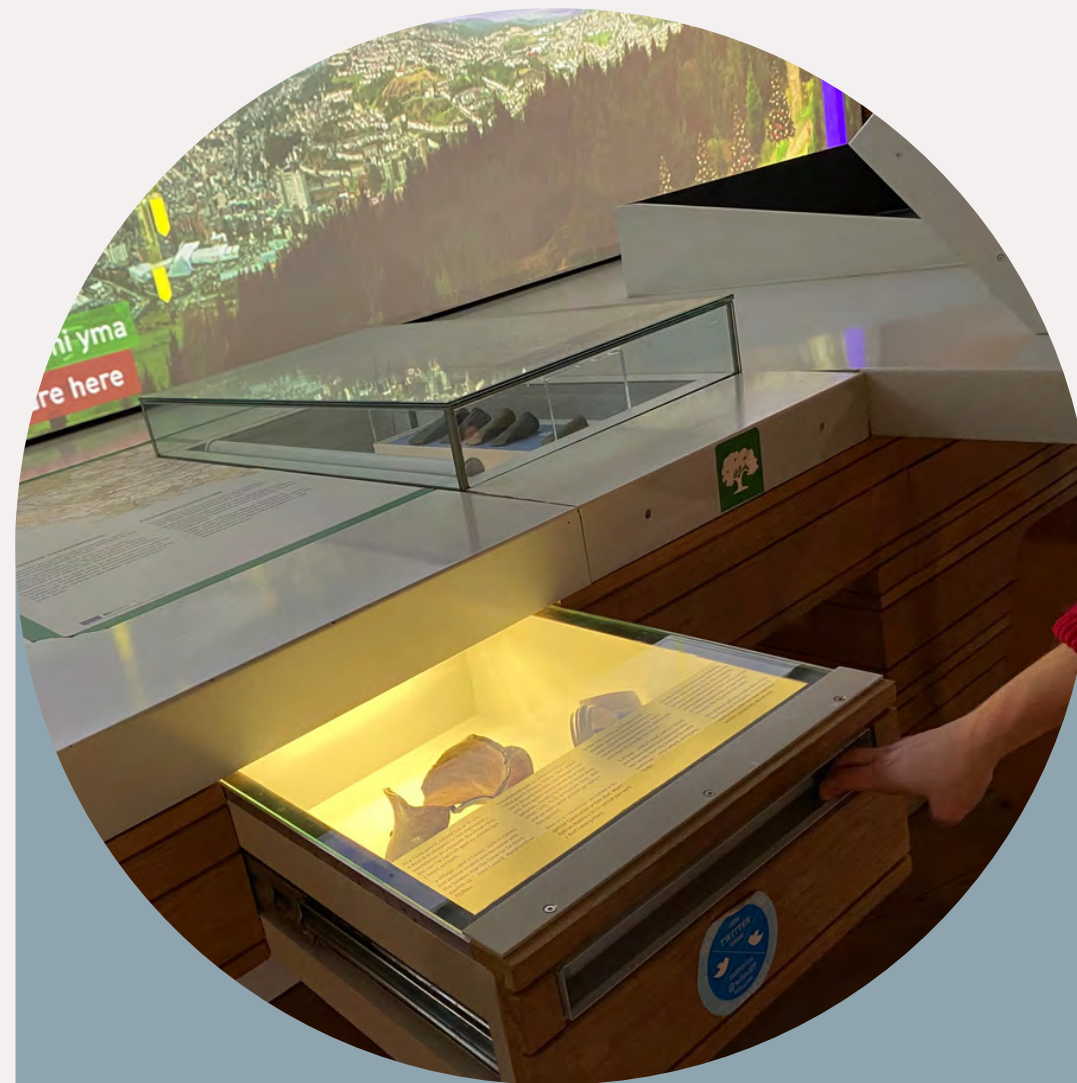
And some will be quiet and naturally lit.

Interacting

From simple button pushing to using touchscreens, the museum is packed with fun interactives. Look out for this  symbol in this visual story.



Some interactives will use touchscreens.



Some interactives need you to open drawers or push buttons.



And some will be projected on to surfaces.

Upper Floor Galleries

At the top of the main stairs, you will first enter the 'Red Wall' gallery. Go to the left towards the 'Energy' gallery and then to the interactive 'Landscape' gallery.



← Landscape Gallery

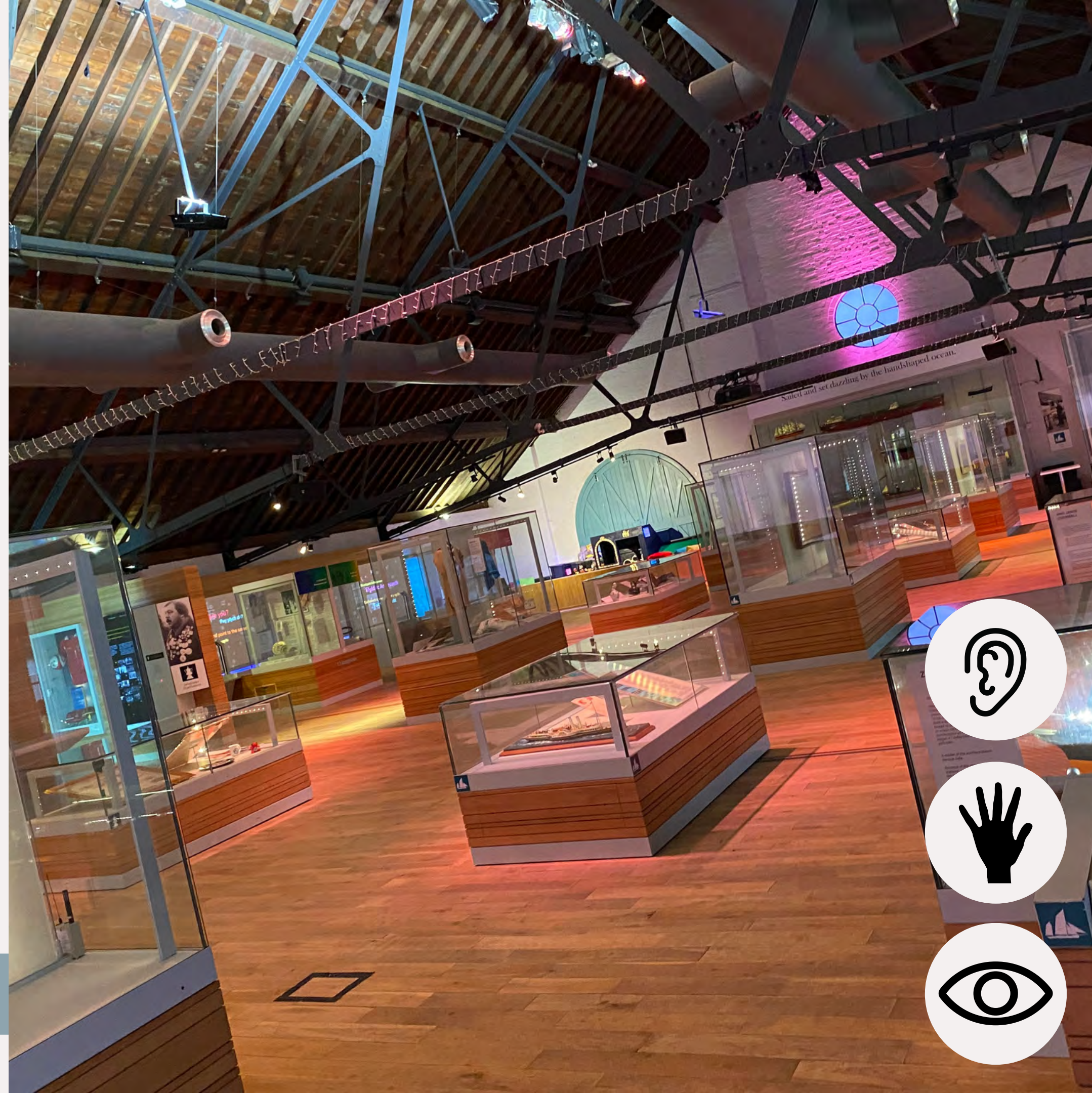


Upper Floor Galleries

After the 'Landscape' gallery, you will go into a large space which contains the 'Sea', 'People', 'Communities' and 'Organisations' galleries. There is also a play area. Lots of interactives, sounds and changes in light here.



← Play Area



Upper Floor Galleries

As you leave the 'Organisations' gallery, you will enter the 'Achievers' gallery. A reading/seating area can be found here and the upper floor toilets.



Upper Floor Galleries

At the end of the 'Achievers' gallery, you will see a raised walkway. That will take you to the 'Money', 'Day's Work' and 'White Wall' galleries. Most of these galleries use video and sound to tell stories. BSL is used for the video content.



Ground Floor Galleries

Next to the 'White Wall' gallery is a staircase and lift. On the ground floor, you will find the 'Networks', 'Coal', 'Transformations' and 'Metals' galleries. Once you get to the end of this space, you will find you are back at reception.



GRAFT Garden

You get to the GRAFT garden through the building foyer.

The garden can be busy with lots of people helping to take care of the flowers and vegetables grown here.

There are bees living in the garden in hives. You can view them from the Bee gallery on the upper floor when they are in residence.



Lunchroom

The Vivian room is used as a lunchroom for learning groups. This space can be shared with other groups.

The Vivian room is a large square room, with lunch benches, a sink at high and low level.



Quiet areas

There is a chill out room on the ground floor for anyone who needs some time out during their visit.



The chill out room is open during museum opening hours. It is next to the ground floor lifts in the foyer.

There is a comfortable reading/seating area on the upper floor in the 'Achievers' gallery.



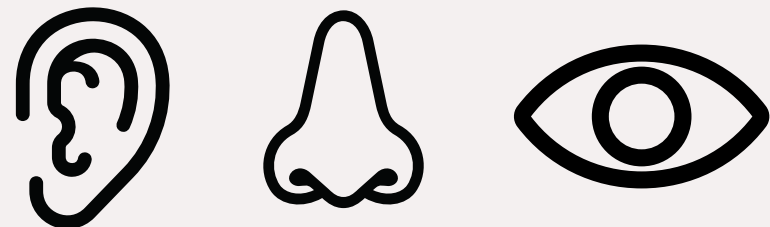
This area is near the upper floor toilets in the 'Achievers' gallery.



Toilets

Toilets can be found on the ground floor and upper floor. Disabled toilets are on both floors at the same locations.

Doors and hand dryers are noisy in these areas.



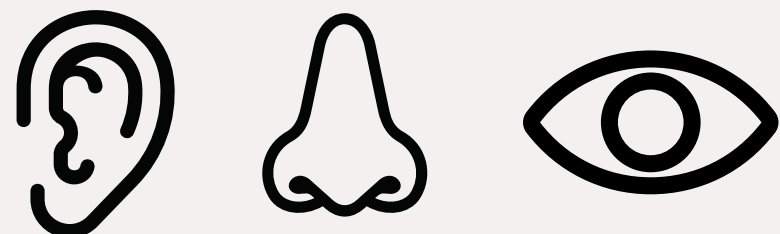
Ground floor toilets can be found next to the cafe area.



There are more toilets located in the Achiever's gallery, on the upper floor.

Changing places Toilets

There is a changing places toilet on the ground floor next to the 'Networks' gallery, near the staircase.



Ask for a Radar key at the main reception desk in the foyer.



The changing places toilets include a shower, adjustable height sink, bed and facilities for a hoist.

More Information

The following pages contain additional information for booking a physical or virtual visit and exploring the museum online.



Virtual visits

Would it be useful to book a virtual visit before you visit the museum?

Connect your class with Amgueddfa Cymru – National Museum Wales for a free live interactive workshop.

Designed for learners aged 7-11, the workshops cover areas of the curriculum including: Humanities, Expressive Arts and Health and Wellbeing.



[Click here for more information](#)

Onsite Workshops

You can book to take part in a facilitated workshop, which may be led by a costumed facilitator.

You may be asked to dress in Victorian costume, hold and use objects or take part in role-play.

We offer different workshops throughout the year - see website for details.



[Click here for more information](#)

Booking

When booking a visit please let us know your group's needs. Do you need us to:

- **Adapt the content or delivery of a session. e.g. pace, language, content, activities, costumes, things to avoid / encourage.**
- **Create a more flexible timetable.**
- **Arrange use of a separate space for lunch.**
- **Look at reducing lighting, sounds - where possible.**

Contact: learning.waterfront@museumwales.ac.uk



Amgueddfa
Genedlaethol
y Glannau
STORI DIWYDIANT A
BLAENGAREDD CYMRU

National
Waterfront
Museum
WALES' STORY OF
INDUSTRY & INNOVATION



AMGUEDDFA CYMRU

Visual Story

We hope you enjoy
your visit to National
Waterfront Museum,
Swansea

