

**AMGUEDDFA
CYMRU**

Visual Story

**A trip to the
National Wool
Museum**



Visual Story

This is a visual guide for learning groups preparing to visit.

It includes useful information for all learners including those with additional needs.



Symbols used in this guide



This symbol shows when a place has strong smells.



This symbol shows when a place is noisy.



This symbol shows when a place has a change in lighting.



This symbol is used to highlight areas where you can touch objects.



Used to highlight a disabled access point/access information.

If you arrive by coach

Your coach will stop just outside the museum front gates. Walk down the pathway and through the black gates to get to the museum entrance next to the waterwheel.



Museum Entrances

The museum has two entrances. The entrance next to the waterwheel will be the entrance school groups normally use.

The other entrance is next the main car park at the rear of the building.



Entrance next to waterwheel



Entrance next to main car park



In the Building Foyer

Both entrances lead to the building foyer. Here you will see reception, the gift shop and the cafe. There are also accessible toilets here.



Reception



Gift Shop



Cafe



People you will meet

When you enter the museum, you will see museum staff at the reception desk.

Some staff wear a uniform with the museum logo on it and some may just wear a badge.

They are there to help you have a good visit and answer any questions.



During your visit, you may not meet the exact same people as shown in these pictures

People you will meet

You may meet some volunteers at the museum. They wear red uniforms.

They offer their time and demonstrate different crafts, from knitting to spinning.



During your visit, you may not meet the exact same people as shown in these pictures

Map of the Museum

Near the reception desk you can collect a map of the museum.

If you want a digital version click the link on this page.



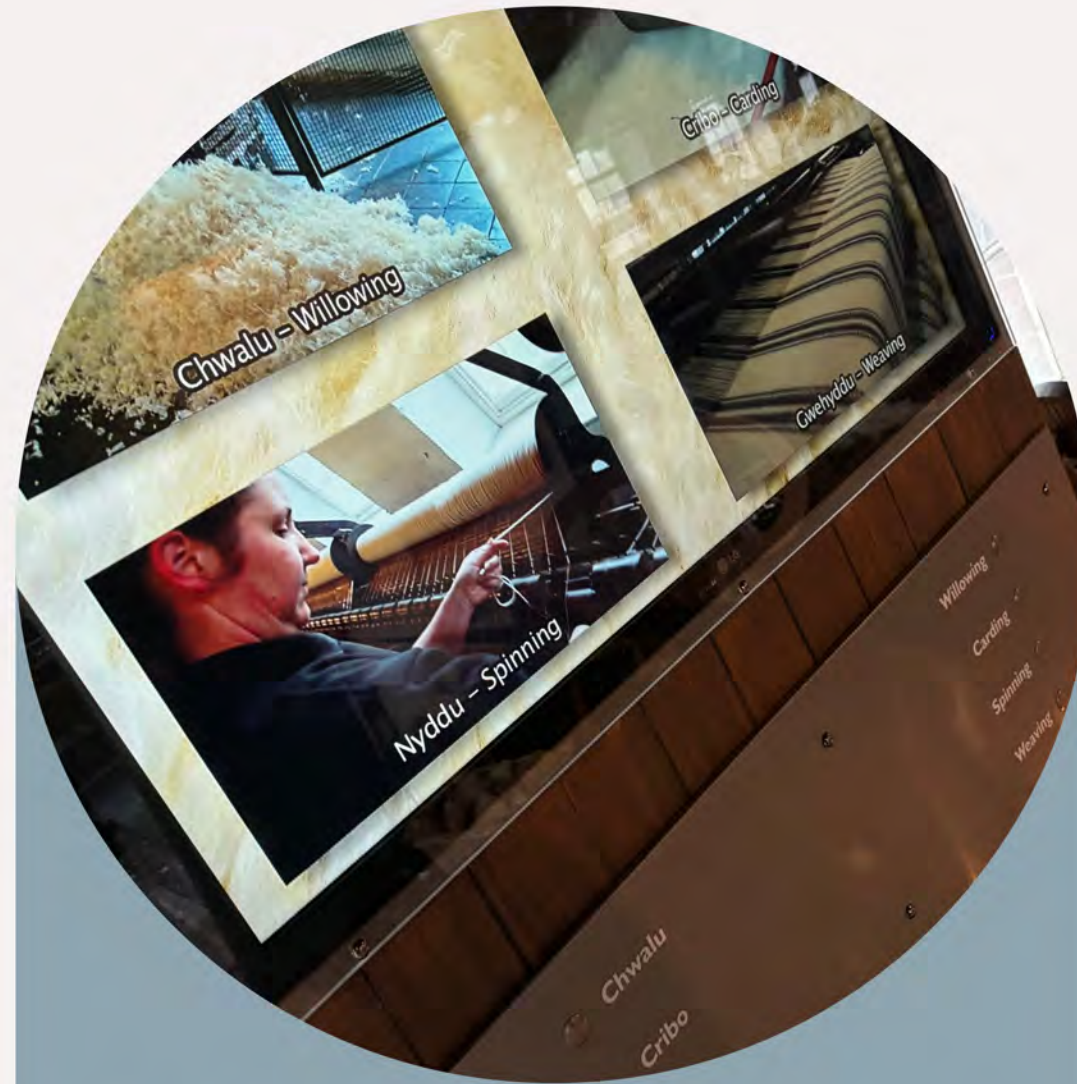
[Click here for more information](#)

Interacting

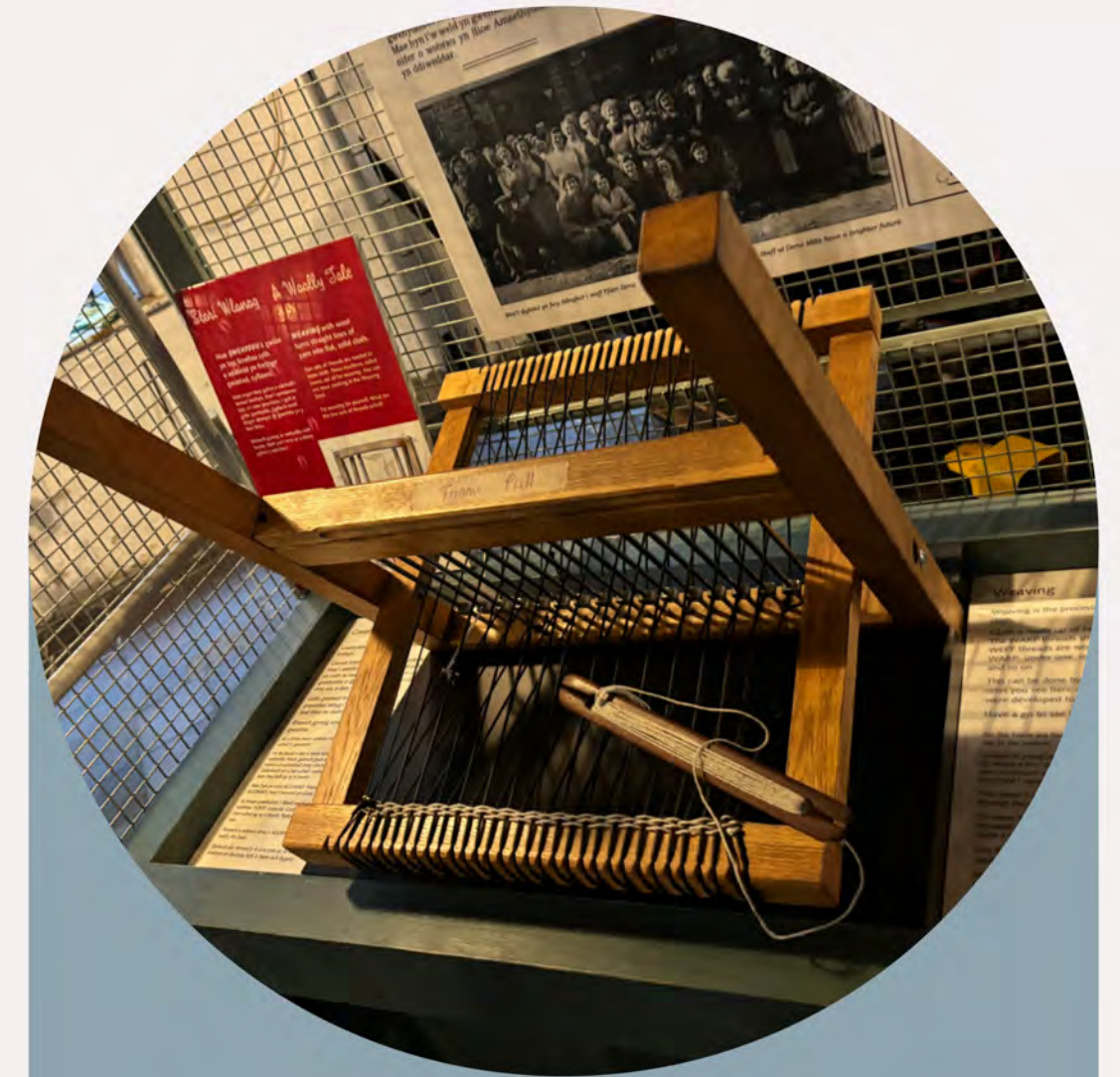
There are many things around the galleries that you can interact with. Look out for this  symbol in this visual story.



You will see wool samples to touch

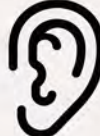


Buttons that activate films and sounds



Replica looms and other hands-on interactives

Demonstrations of the fleece to fabric process

The fleece to fabric process happens at the museum. You may see demonstrations on the machinery. The mill areas on the Ground Floor and Upper Floor have this machinery. When active it is extremely noisy. Look out for this  symbol in this visual story.



Ground Floor Mill



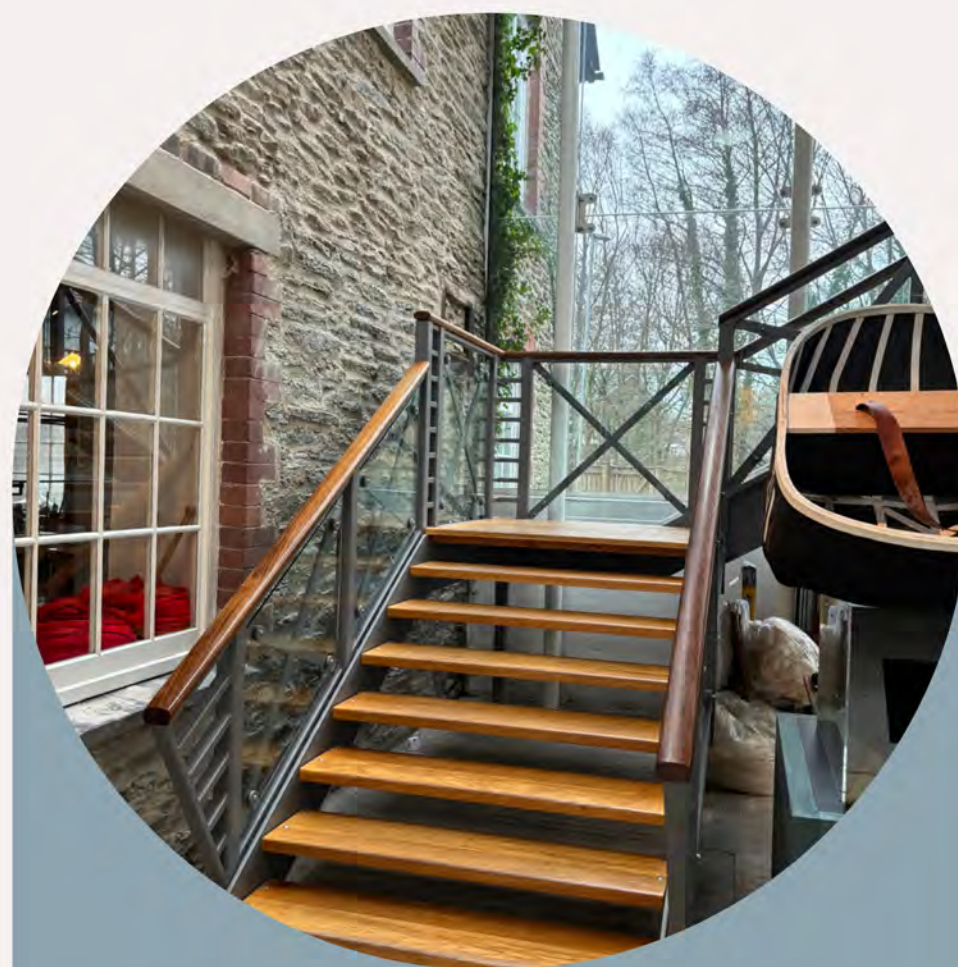
Upper Floor Mill

Getting to the Galleries

The doorway near the reception desk will take you into the galleries. The first area you will see will be the Longyard. From here you can get to the Ground Floor and Upper Floor galleries.



Gallery Entrance near reception



Staircase to the Upper Floor



Lift to the Upper Floor



Ground Floor - The Longyard

This is where you will begin your trip around the galleries. You can feel wool here and have a go at wool crafts.

Walk down the yard and you will see the Finishing Plant Washroom.



← Wool crafts



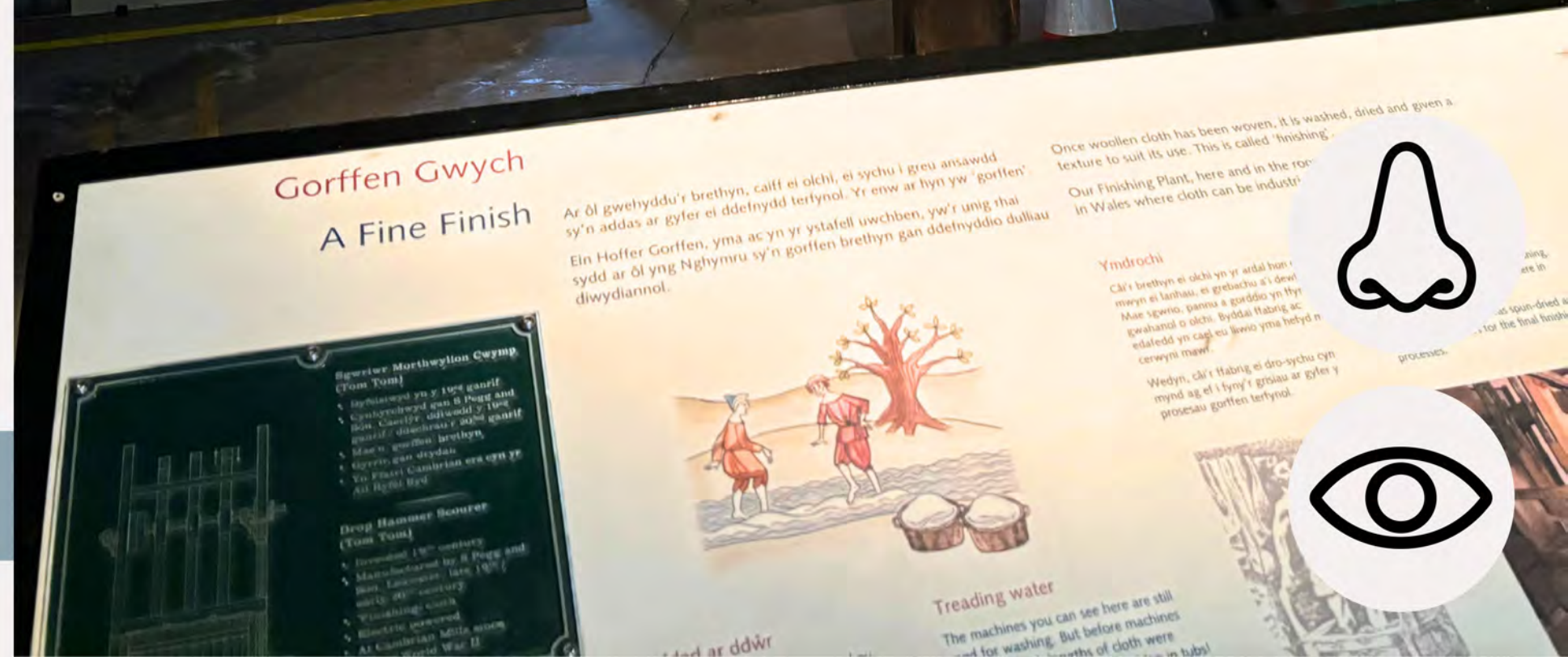
Ground Floor - Washroom

This is a small space, with low lighting. You can explore the other side of the room, by using a different entrance, which is near the waterwheel entrance.

When you leave the room you will turn left and exit through the double doors.



← Other side of the room



Ground Floor - Mill

When you exit the Longyard you will be outside. Go through the single black door on the right, and you will enter the Ground Floor Mill.

You will see different machines here which are used to turn fleece into fabric.

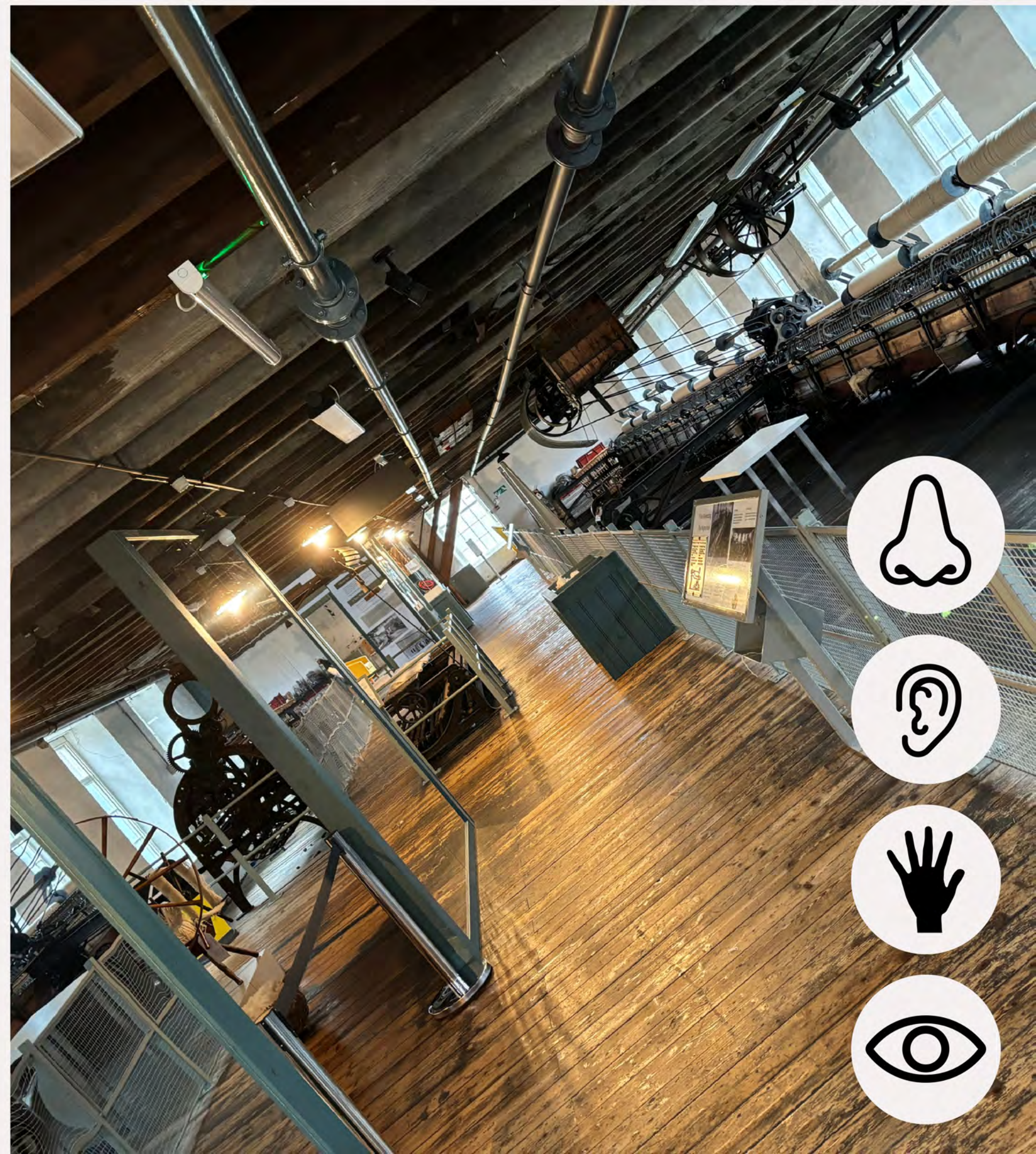
You may meet craftspeople who operate the machinery. Ask them any questions you may have.



Upper Floor - Mill

When you leave the Ground Floor Mill, you will use the staircase or lift to get to the first floor. At the top of the stairs, you will enter this room first.

You may meet craftspeople who will be working on the spinning wheels here.



Upper Floor - Mill

As you walk down the Upper Floor Mill you will see an area with comfortable seating, displays and audio recordings.



← Push to hear lots of stories



Upper Floor - Finishing Plant Tenter Area

A doorway in the middle of the Upper Floor Mill will lead you to a raised walkway. This has glass sides and takes you above the Longyard into the Tenter Area.

This is where woven cloth would be finished and dried.



Upper Floor - Sewing Room, Market Stall and Draper's Shop

You will hear recorded voices when you enter this gallery. You will also see a replica market stall and Draper's shop. Welsh shirts, traditional Welsh costumes are there for you to try on.



Market Stall



Draper's Shop



Costumes to try on

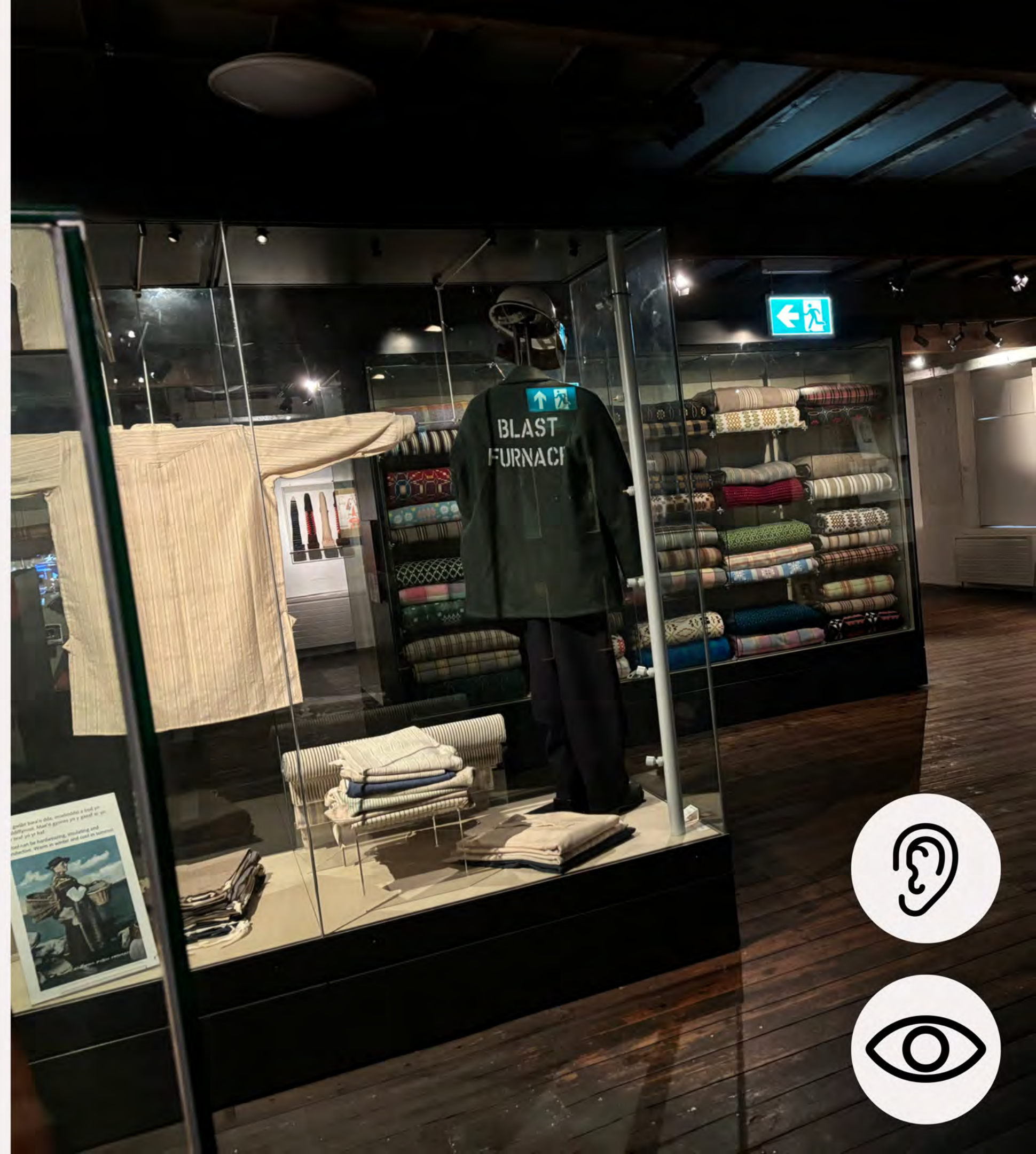


Upper Floor - Textile Gallery

This is the final gallery. Here you will see a collection of traditional clothes and traditional Welsh blankets.

You will also hear music and sounds of people talking about the blankets.

Once you have left this room you will go to the Ground Floor and back to the building foyer.



Toilets

Toilets can be found on the ground floor. Next to the cafe, in the building foyer, you will find the toilets.

Doors and hand dryers are noisy in these areas.



Toilet entrance next to Cafe



Male, Female and Disabled toilets



Education Room

If you have a workshop booked or are having lunch as a group then you will head to the Education Room.

The Education Room is near where you first entered the site. It is outside of the main building, up a slight hill.



Go out the entrance (waterwheel side). Turn left and follow the foot path up the hill.



Go through the gates. The building on your left is the Education Room.

Education Room

The Education Room is bright and colourful. Here you might take part in a workshop, craft activity or you may just have lunch during your visit.



Education Room Toilets

Learners have access to toilets which are inside the education room. They include a disabled toilet.



← Inside disabled toilet



More Information

The following pages contain additional information for booking a physical visit and exploring the museum online.



Exploring the Museum

You can explore the Museum online before you visit if you wish.

360°



[Click here for more information](#)




Onsite workshops

You can book to take part in a facilitated workshop.

The workshop can involve wet felting, meeting craftspeople, watching machine demonstrations and possibly weaving or paper weaving.



Booking



When booking a visit please let us know your groups needs. Do you need us to:

- **Adapt the content or delivery of a session. e.g. pace, language, content, activities, costumes, things to avoid / encourage.**
- **Create a more flexible timetable.**
- **Arrange use of a separate space for lunch.**
- **Look at reducing lighting, sounds - where possible.**

Contact: wool@museumwales.ac.uk



**AMGUEDDFA
CYMRU**

Visual Story

**We hope you enjoy
your trip to the
National Wool
Museum**

