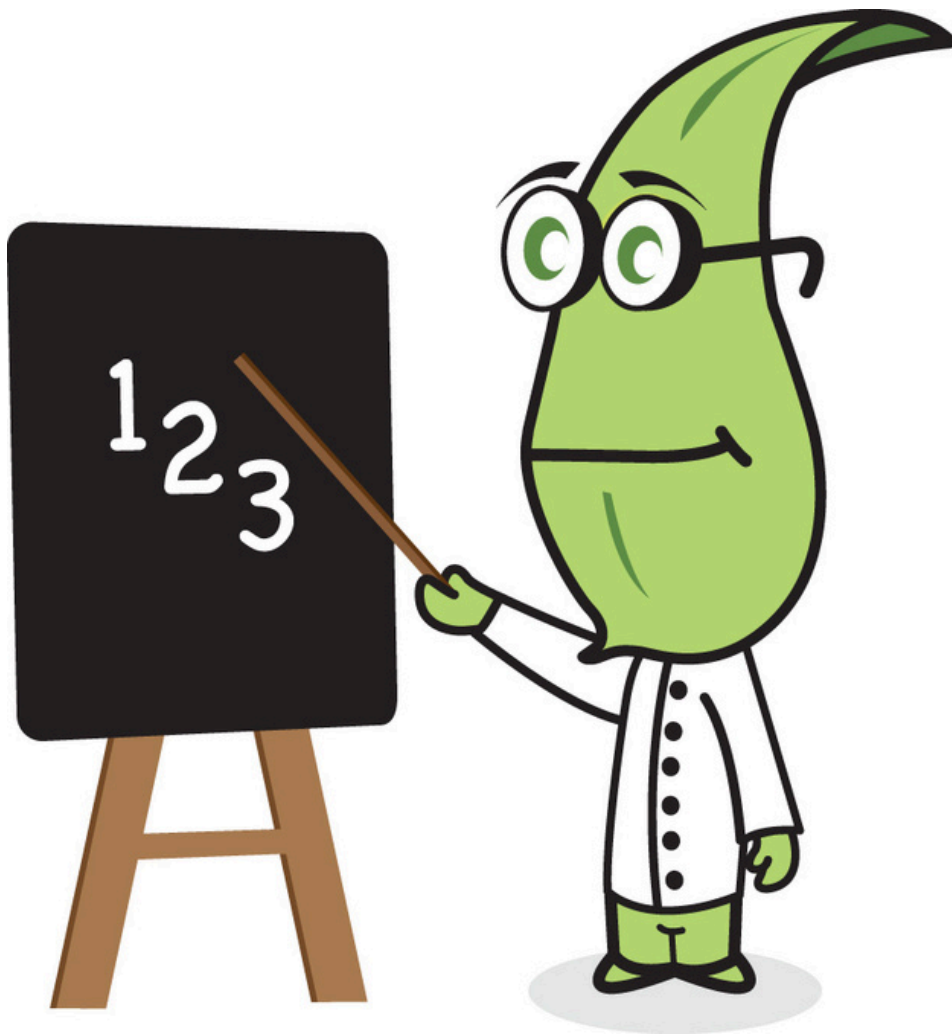


AMGUEDDFA CYMRU

Spring Bulbs for Schools Numeracy Investigation

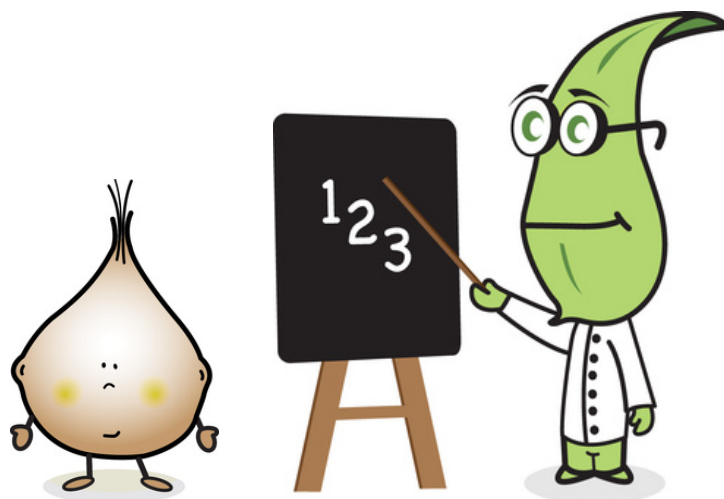


Welcome Bulb Buddies!

Spring Bulbs for Schools is a climate change investigation run by Amgueddfa Cymru - National Museum Wales.

School scientists across the UK plant bulbs in their school grounds and record observations to study climate change. They keep local weather records and record flowering dates to see how changes in weather patterns are affecting flowering in daffodil and crocus bulbs. The project has been running in Wales since 2005 and across the UK since 2012.

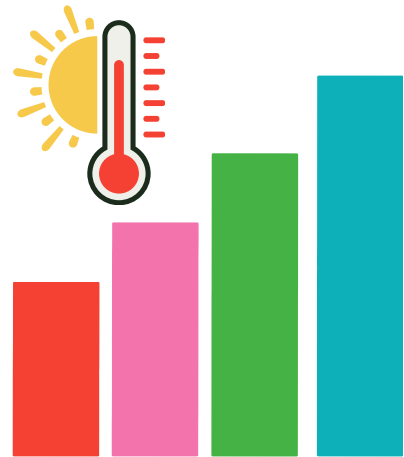
This year we are inviting schools to study this data for themselves. We will be sharing a full data set and bite size numeracy quizzes that focus on understanding graphical data.



Quizzes

Quiz 1: Temperature, rainfall and sunshine across the UK in 2020

Study bar graphs to deduce national trends in temperature, rainfall and sunshine.



- Which country was the warmest / coldest?
- Which country had the most sunshine?
- Which country had the most rain?
- Also, some general knowledge questions about flowers and bulbs.

Link: <https://kahoot.it/challenge/004999346>

Game PIN: 004999346

Quizzes

Quiz 2: Rainfall across the UK in 2020

Study bar graphs to deduce national trends in rainfall.



- Study the units carefully to deduce the average monthly rainfall records for Wales, England, Scotland and Northern Ireland.
- Order countries from most to least rainfall.
- General knowledge question about measuring rainfall.

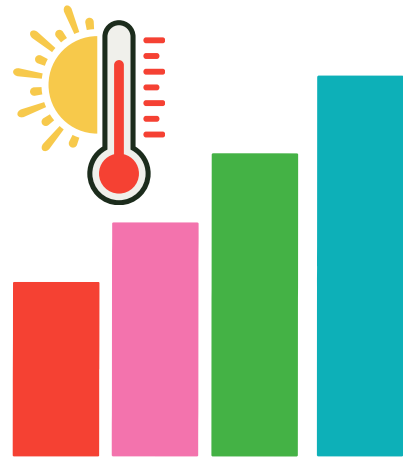
Link: <https://kahoot.it/challenge/007484890>

Game PIN: 007484890

Quizzes

Quiz 3: Temperature across the UK in 2020

Study bar and line graphs to deduce which were the warmest and coldest countries in 2020.



- General knowledge question about temperature units.
- Study bar charts to deduce the average temperatures for Wales, England, Scotland and Northern Ireland.
- Order countries from warmest to coldest.
- Study line graphs to answer true or false questions about monthly temperatures.

Link: <https://kahoot.it/challenge/008250640>

Game PIN: 008250640

Quizzes

Quiz 4: Compare weather records in 2020 with those seen in previous years

Study line and bar charts to look for trends. Pick out temperatures that do not fit with the trends.



- Study line graphs to pick out high and low monthly average temperatures.
- Study Bar charts to order the warmest and coolest years.
- Study bar charts to see which years had the most and least rainfall.
- Study line graphs to deduce which years had the most and least hours of sunshine.

Link: <https://kahoot.it/challenge/00772280>

Game PIN: 00772280

Fun Challenges

The following report is available on the Spring Bulbs for Schools website:

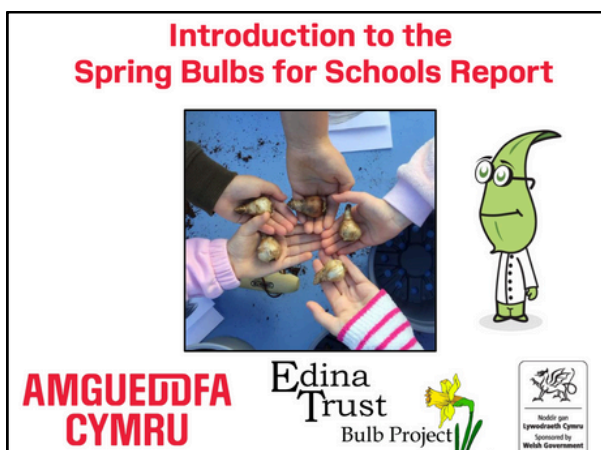
<https://museum.wales/learn/spring-bulbs-for-schools/>



Report 2022-2023

The Spring Bulbs for Schools Investigation Report 2020 is presented as three interactive PowerPoints. These reports take a closer look at the weather and flower data and explore trends in the data.

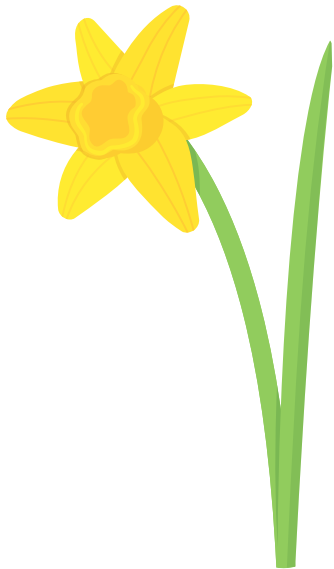
- [Introduction Spring Bulbs for Schools Report](#)
- [UK Spring Bulbs for Schools Report](#)
- [Wales Spring Bulbs for Schools Report](#)



Fun Challenges

**Spreadsheet to study
the data for yourself!**

The weather data is available on the website as an Excel spreadsheet. You can download the data and create your own graphs. The flower data for each year is available on the website. You can select years from the tabs at the top of the page. You can explore this and make your own graphs!



[Daffodil data](#)



[Crocus data](#)

Fun Challenges

Compare weather data from different parts of the UK

- [Click here](#) to explore our map of participating schools. You can click on the map to find out the names of schools from different areas. You can also scroll back in time to see which schools have taken part before.
- Once you have chosen the schools you'd like to compare, you can find their weather data by selecting the name of the school from the drop down menu on the left of this page:
https://museum.wales/spring-bulbs/schools/?type=weather_detail&year=2020&school=587
- If schools have taken part before then the years they have taken part will appear at the top of the page. This means you are able to compare weather readings from different years.

#BulbBuddies

@Professor_Plant

@Amgueddfa_Learn

Edina
Trust

AMGUEDDFA
CYMRU