

Annual Review

What we did from 2023 to 2024



This document was written by the **Amgueddfa Cymru - Museum Wales**. It is an easy read version of 'Annual Review 2023-24'.

July 2024

How to use this document



This is an easy read document. But you may still need support to read it. Ask someone you know to help you.



Words in **bold blue writing** may be hard to understand. You can check what the words in blue mean on **page 32**.

**AMGUEDDFA
CYMRU**

Where the document says **we**, this means **Amgueddfa Cymru**. For more information contact:

Website: museum.wales

E-mail: post@museumwales.ac.uk

Phone: 0300 111 2 333



Easy Read Wales made this document into Easy Read using **Photosymbols**. [To tell us what you think about this easy read version, click here.](#)

[Photosymbols Licence number 403527247](#)

Contents

About us.....	4
In 2023 to 2024.....	6
How we get money to do what we do	8
Our 6 commitments	9
1. Make sure our work includes everyone	12
2. Help people be creative and learn at any age.....	16
3. Look after nature and our environment.....	18
4. Support people’s well-being.....	21
5. Do more things digitally	23
6. Work with others around the world.....	25
Other things we have done	27
Coming up in 2024.....	29
How you can support us	31
Hard words	32

About us

**AMGUEDDFA
CYMRU**

We are **Amgueddfa Cymru**, we run the national museums in Wales. Amgueddfa Cymru are the Welsh words for Museum Wales.



We are a charity with 7 museums and 1 collections centre in Wales. You can visit our museums for free, and everyone is welcome.



Thank you to everyone who has visited, helped us, and worked with us this year.



Our staff welcomed over 1.56 million people this year.



Over 2.5 million people looked at our website.



We delivered projects and programmes with and for our communities.



We started some new projects. For example, the opening of the Vulcan Hotel at St Fagans. And making changes to the National Slate Museum in Llanberis.



We had new trustees, a new Chair, Kate Eden and a new Vice Chair, Rhys Evans.



This document tells you some of the things we did this year. Like:

- our learning and events programme
- new projects and programmes
- what work we did to develop our collections

In 2023 to 2024



We welcomed over 1 million visitors to our museums.



Over 2 million people looked at our website. We had over 200 thousand followers on social media.



More than 800 volunteers gave us more than 34 thousand hours of their time.



We had over 5 million objects and memories in our national collection of art, history and science.



People in 229 places in the world looked at our website.



We lent our collections to places and groups in 19 local authority areas in Wales.



More than half of our staff can speak Welsh. And 26 out of 100 members of our staff have very good Welsh language skills.



More than 300 staff have completed our bilingual carbon literacy training. This is training about climate change.



We did 10 research projects about art, history and science.



More than 200 thousand children and young people took part in our learning programme in schools.

How we get money to do what we do



We were given money by:

- National Lottery Heritage Fund,
- Paul Hamlyn Foundation
- the players of People's Postcode Lottery
- National Lottery Community Fund
- and the Welsh Government



We also got money from visitors, trusts, foundations, patrons, supporters, and businesses.



Thank you to everyone who bought things in our cafes, shops, and at our **exhibitions** and events.



An **exhibition** is a display we develop with communities. It is where we show things like collections and art to the public.

Our 6 commitments

There are 6 things we want to do by 2030:



1. Make sure our work includes everyone.

2. Help people be **creative** and learn at any age.



Creative means using your ideas and making something new. It includes things like painting, writing stories, making a film or cookery.



3. Look after nature and our **environment**.

The **environment** is where we live. It includes the land, the sea, the air, and everything that lives in and on it. For example: plants, animals and fish.



4. Support people's well-being.



5. Do more things **digitally**.

Digital means using things like computers, the internet, tablets, and smartphones.



6. Work with others around the world.





To make sure we reach our goals:

We work with other organisations to provide better services.



We invite people and local communities to share their stories.



We train our staff to:

- develop their skills
- look after the nation's collections
- be fair and equal to everyone
- look after the **environment**

1. Make sure our work includes everyone



We are working with people and communities in Wales to:



- learn about people's stories



- and share things that are important to people.



To make our collections fairer, we have started projects with different communities in Wales.

Projects



The Valleys Re-told project. We are working with people in Merthyr Tydfil and the Cynon Valley to create new stories about visual art collection.

Esmée Fairbairn
Collections Fund

This project is funded by the Esmée Fairbairn Collections Fund. And delivered by the Museums Association.



Safbwynt(iau)/Perspective(s) programme. We are working with Arts Council of Wales, **creative** practitioners and visual arts organisations.



We want to bring new ideas to help people learn about our collections.

Exhibitions



We had many **exhibitions**. These **exhibitions** were about our collections and people's stories.

Some **exhibitions** were:



- **Mike Parker's On the Red Hill - A Love Story** of Reg and George showing photographs of their life together.



- **Petitioning for Peace** - about the stories of the women of Wales who demanded a future free from war.



- **Ours to Tell** - A project aimed to collect and tell the story of **LGBTQ+** lives and experiences.

LGBTQ+ stands for Lesbian, Gay, Bisexual, Transgender and Queer or Questions plus others.

Community events



We had community events with the help of local groups.

For example:



- Dandiya Dancing to celebrate the Hindu festival called Dussehra.



- Diwali Mela celebrations with the Hindu Cultural Association in Wales.



- Welsh Somali Heritage Day. This was with Somali Elders, Grangetown Pavilion Youth Forum and Kayd Somali Arts and Culture celebrating Somali Women.

2. Help people be creative and learn at any age



We continue to run lots of fun activities for learners of all ages.



We reached more than 288 thousand learners across our museums.



We have a new [Learn webpage](#) to support people to learn and visit our museums in-person or online.

We did events like:



- Swansea Science Festival with Swansea University
- Halloween Nights at St Fagans
- Christmas programmes across all museums
- Food Festival at St Fagans. We celebrated Welsh food at this festival



Our volunteers gave us more than 34 thousand hours of their time.



We are helping young people learn new skills. We offer training at Big Pit and National Wool Museum.



At the National Wool Museum we also teach weaving through Melin Teifi.



At National Museum Cardiff, we are working with Pinc College. This is to support **neurodiverse** young people who have not been in mainstream schools for a few years.

Neurodiverse means people with brains that work in a different way to others. Like Autism and ADHD.

3. Look after nature and our environment



We are working with communities to develop green spaces. Green spaces are land covered with trees and plants. For example, parks, garden.



We help our staff and visitors do things that help the **environment**.



3 of our museums got the Green Flag Award. An award was for high quality green spaces managed by voluntary and community groups.



Our **Secret Garden** project at St Fagans supports adults with learning disabilities.



The **Graft** community garden and food project in Swansea supports communities to grow together.



Many groups visit the **Urban Meadow** in Cardiff to learn about plants and animals in the area.



The **Spring Bulbs for Schools** project, supported by the Edina Trust, is growing. Many schools take part to learn about how plants grow.



We continue to improve our workplace. And use less energy.



Our experts help us know more about the **environment**.



We got the Silver award as a **Carbon Literate Organisation**. We are trying to use fewer things and make less rubbish.



We continue to train our staff to do things that help the **environment**.



4. Support people's well-being



We have been doing activities and creating spaces for people with different needs.



We are making changes to the National Slate Museum in Llanberis. It will tell the story of the slate heritage of north Wales.



We are talking to people to find out what changes they would like us to make.



The National Wool Museum won the Best Wool Community award at the first Wool Eisteddfod in October 2023. They are now working on developing the **Melin Teifi** woollen mill.



We want to help people living with **dementia**.

Dementia is an illness that affects the brain. It makes it hard to remember, think and do things.



We started the **Museum Inspiring Memories** project with Alzheimer's Society Cymru.



We want to make it easier for people to get into the museum. And take part in activities. Like by having events in British Sign Language.



We opened The Vulcan Hotel in May 2024 at St Fagans. This is a Cardiff pub we have restored to how it would have been in 1915.

5. Do more things digitally



Online ways of working are helping more people see our collections and spaces.

CELF
AR Y
CYD

We started the [Celf ar y Cyd website](#) last year. It helps to share the national art collection with more people across Wales.



Picture by: Laurie Broughton

It is funded by the Welsh Government and is in partnership with Arts Council Wales and National Library Wales.



Picture by: Tom Powell

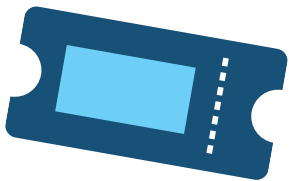
We do a live stream about lambs from the lambing sheds at St Fagans. This year we celebrate 10 years of doing this. You can join us next spring by using #lambcam



We have made our website and learning pages better this year. This is to make it easier for everyone to use and learn.



You can check images of our museums online to help you prepare for a visit. You can also have online tours [including our National Roman Legion Museum here](#).



We are working on our ticket system and online experience. It will make it easier for people to join us at our events.



6. Work with others around the world



We continue to welcome visitors from across the UK and the rest of the World.



Our exciting new **exhibition**, **Art of the Selfie** has Van Gogh's Portrait of the Artist (1887).



We had this on loan from Musée d'Orsay, Paris. We lent our painting **La Parisienne** by **Renoir** in exchange.



We have hosted international visits. We hosted visits for:

- the Museum of Islamic Art
- the Ambassador for Japan to the UK
- and the Partnerships Overseas Networking Trust who brought a group of people from Uganda



We are making good friends with museums across the world, like:

- Iziko Museum South Africa
- University of Kathmandu, Nepal
- National Museum Kenya



We are going to exhibit the Gwen John paper collection in 2026. We are working on these papers now to help protect them and get them ready.



We took part in the **Llŷn & Eifionydd National Eisteddfod** and the **Royal Welsh Show**. We got a chance to meet people and talk about our projects.



We were also at the **Wales Week London** event for the second time. We talked about how sports and culture help celebrate Wales today.

Other things we have done



We do a lot of work to take care of the collections we have. And to make our places welcoming and easier to use.



We want to support the **Well-being of Future Generations**. We want to continue to support people and communities across Wales.



We made changes to the **Honorary Research Fellow** scheme. It provides a chance for people to carry out research about our collection.

We also have **collaborative doctoral partnerships** where we help support students doing research.



This new scheme is helping us find new ideas and ways of working.



Picture acquired under the
Treasure Act 1996

We have a legal duty to report Treasure finds in Wales. This means things or places that are found by the public that are important and valuable.



Our experts and the Portable Antiquities Scheme Cymru team give advice on these finds to check if they are treasure.



Picture acquired under the
Treasure Act 1996

There have been several important finds this year. Like the Llantrisant Fawr hoard.



We continue to help our staff develop their skills. For example, learning to speak Welsh language or using BSL.



We are making it easier for people from different backgrounds to work with us by changing how we find new staff.

Coming up in 2024



There is lots to look forward to over the next year at **Amgueddfa Cymru**. We have **exhibitions**, events, new projects, and things to do.

Some events and shows to look for later in 2024 and 2025



National Museum Cardiff

Art of the Selfie
March 2024 to January 2025



The Valleys
May to November 2024



STREIC! 1984-85 STRIKE!
October 2024 to April 2025



Big Pit National Coal Museum

STREIC! 1984-85 STRIKE!
March 2024 to March 2025



St Fagans National Museum of History

**Petitioning for Peace
March to September 2024**



National Waterfront Museum

**Making Waves – RNLi Cymru 200
June 2024 to June 2025**



**Ours To Tell
March to August 2024**



National Slate Museum

**LAYERS by Rhiannon Gwyn
May to October 2024**



**The dates might change. See our website for
details before you visit.**

How you can support us



We want to make sure that **Amgueddfa Cymru** is for everyone, for present and future generations.



Your donations small or big can help us make this possible.



We get funding and money from the Welsh Government and other organisations.



Picture by: Emma Goldsmith

We also get money from visitors, trusts, foundations, patrons, supporters, and businesses.

This helps us to:

- run projects and events
- get new things for **exhibitions**
- and add new objects to the collections

Hard words

Creative

Creative means using your ideas and making something new. It includes things like painting, writing stories, making a film or cookery.

Dementia

Dementia is an illness that affects the brain. It makes it hard to remember, think and do things.

Digital

Digital means using things like computers, the internet, tablets, and smartphones.

Environment

The environment is where we live. It includes the land, the sea, the air, and everything that lives in and on it. For example: plants, animals, and fish.

Exhibition

An exhibition is a display we develop with communities. It is where we show things like collections and art to the public.

LGBTQ+

LGBTQ+ stands for Lesbian, Gay, Bisexual, Transgender and Queer or Questions plus others.

Neurodiverse

Neurodiverse means people with brains that work in a different way to others. Like Autism and ADHD.