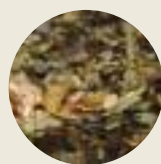
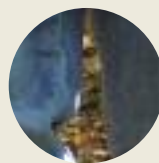
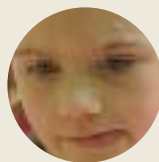


national
museum
wales
amgueddfa
cymru



Amgueddfa Cymru
your national museums

➤ a positive contribution to life
in Wales during the recession

National
museum
wales
amgueddfa
cymru



Published in 2009 by Amgueddfa Cymru – National Museum Wales,
Cathays Park, Cardiff, CF10 3NP, Wales.

© the National Museum of Wales

Editor: Heledd Fychan
Production: Mari Gordon
Design: Mopublications
Welsh text: Testun, Geraint Macdonald
Printing: mwl

All rights reserved. No part of this publication may be reproduced, stored in a retrieval system or transmitted in any form or by any means, electrical, mechanical or otherwise, without the prior permission in writing of Amgueddfa Cymru – National Museum Wales or the copyright owner(s), or as expressly permitted by law. Enquiries concerning reproduction outside the scope of the above should be sent to the Publications Department, National Museum Cardiff, CARDIFF CF10 3NP.

This document is available on our website, www.museumwales.ac.uk.

This document has been printed on paper from well-managed sources using vegetable-based inks. Both the paper and the manufacturing process are FSC certified. The printers are also accredited to ISO 14001, the internationally recognised standard.



> Contents



- 04 Your national museums
- 05 More than buildings
- 10 Exhibitions and events
- 22 Enhancing the experience
- 28 Wales and beyond

> Promoting Wales

It's now eight years since the Welsh Assembly Government made a commitment to providing free entry to our national museums. It's a message we're keen for people to remember, especially at a time when entry charges may discriminate against those who have been most badly affected by reduced income. As you'll see in this paper, Amgueddfa Cymru is more than just a collection of buildings and objects. We give people affordable, inspiring and uplifting things to do and places to go, either on their own or with their families and friends, which can help improve their quality of life. By providing valuable thinking spaces, we also give people the opportunity to challenge their minds and express themselves creatively.

We provide the people of Wales with an opportunity to not only visit our museums for free, but also to get involved. There are a number of volunteering opportunities available throughout the organization, from work experience and work placements to volunteering and apprenticeships, creating valuable openings when other doors are closing.

Amgueddfa Cymru also feels a responsibility towards promoting Wales beyond its borders. We are a nation with a rich history and an abundance of traditions that will interest the world. By participating in projects such as the Smithsonian Folklife Festival and by taking our Impressionist art collection on an eighteen-month tour of the United States, we hope to help put Wales firmly on the international map. We want more visitors to come to Wales and witness for themselves all we have to offer.

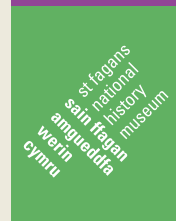
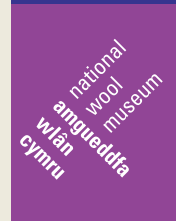
The recession has made it a financially challenging time for everyone. Amgueddfa Cymru is no exception, but we remain as committed as ever to making a positive contribution to life in Wales.

Times are tough, but with your continued support Amgueddfa Cymru will achieve its vision of being a world-class museum of learning. They're your national museums, so why not visit, join in and get involved. We look forward to welcoming you soon.

Michael Houlihan, Director General



➤ Your national museums



Amgueddfa Cymru is a family of seven museums located throughout Wales. Each museum gives a unique and vivid experience of Wales's history, while sharing the Amgueddfa Cymru values of excellence and learning.

Entry is **free** to Wales's seven national museums

Amgueddfa Cymru also has a **Collections Centre** in Nantgarw which houses part of our industrial collections, including items such as boats, cars, steam rollers and other large vehicles. Smaller items such as ship models and paintings are also held there.

For more information about the museums, please visit our website: www.museumwales.ac.uk

➤ More than buildings

Amgueddfa Cymru is more than just a family of seven museums to visit. Our curators work with museums and venues across Wales to enhance local resources and enable local audiences to engage with the national collections. As your national museums, we are committed to making the best possible contribution to life in Wales.



It is estimated that Amgueddfa Cymru's total economic impact is **£83m** of output and **£53m** of gross value added – associated with over **2,000** full-time equivalent jobs

From an independent study by the Welsh Economic Research Unit at Cardiff University's Business School

Building opportunities

➤ St Fagans is well known for re-erecting and preserving historic buildings. What this also achieves, and what might not be so obvious, is that the traditional crafts and skills used to construct these buildings are also preserved.

Today, even more than preserving these skills, St Fagans is also playing a crucial role in training people and passing the skills on. Two apprentices – in masonry and carpentry – have been working alongside craftsmen at the Historic Buildings Unit at St Fagans since September 2008 as part of their formal education courses.

As well as our own apprenticeships scheme, St Fagans is also providing placements for the National Heritage Training Group, a bursary scheme funded by the Heritage Lottery Fund, English Heritage, Cadw and others. The scheme provides funding to give professional tradespeople the opportunity to experience traditional techniques and materials. St Fagans has already provided five (out of a potential seventy-five UK-wide) placements: two painters have completed their training, there is currently another studying traditional painting and decorating and another two apprentices studying traditional carpentry. At a time when other doors and opportunities are closing, Amgueddfa Cymru is keen to seek funding in order to be able to offer more apprenticeships and placements.

Sustainability

➤ Amgueddfa Cymru has made a serious commitment to sustainability. We are ensuring that this issue continues to have a high profile despite the recession through Education for Sustainable Development initiatives and by developing sustainable museums. Despite the fact that we have many historical and listed buildings, we are working on innovative ways to reduce our carbon footprint.

We are already benefiting from the excellent partnership with the Carbon Trust who have undertaken energy reviews across all of our sites. We have used this advice to draw up an action plan and were awarded £250k by the Welsh Assembly Government to be used towards reducing our consumption of gas, electricity and water and thus reducing our carbon footprint.

On a wider sustainability theme we have now received accreditation to Green Dragon level 3 across all of our museums. This scheme allows us to demonstrate that we work sustainably and seek to minimise both energy and waste in all areas of our activities.

We also have a role in taking the message out into the wider community. Our travelling exhibition *What's Occurring?* looks at the impact of climate change and what local communities can do to reduce their environmental impact. This exhibition will travel to our museums in Cardiff, Swansea, Big Pit and Llanberis, as well as other venues in Machynthleth, Brecon, Bridgend, Llandeilo, Pembroke, Blackwood, Carmarthen and Conwy during 2009.

Between April 2008 and March 2009, the Outreach Collection was used by **99,000** people



Sharing our collections

➤ This year marks the 60th anniversary of Amgueddfa Cymru's Outreach Collection – the first national museum loan service of its kind in the world. Formerly known as the Schools Loan Service, the Outreach Collection loans objects to a wide variety of groups, particularly young people, with the aim of inspiring creativity, reminiscence and learning. The service continues to evolve with objects being loaned to community groups, television and film companies, special interest groups and institutions including even a prison.

Our partnership with HM Prison and Youth Offenders Institution Parc demonstrated how those who aren't able to visit a museum can still benefit from the nation's treasures. Using the art and natural history collections as inspiration, prisoners were able to create artworks of their own that will help towards their exams, including OCN, GCSE and AS level. These works were displayed throughout the summer months in the Main Hall at National Museum Cardiff.



The prison welcomed the Outreach Service's involvement. 'We found that the objects borrowed from the Museum helped inspire the participants to be more creative and motivate them to look at a wider variety of objects for inspiration, said Laurence Bater, the Prison's Creative Arts Curriculum Manager. He added, 'A small achievement made by a prisoner can have a significant effect. Something that we often take for granted can really make a profound difference.'



'A fantastic wonderful exhibition of Graham Sutherland's work. Well done. A superb tribute to Pembrokeshire'

Comment from a visitor to Oriel y Parc



Making discoveries

➤ Amgueddfa Cymru is not just concerned with preserving objects, we also make an extensive contribution to research in a wide variety of fields. In 2009, scientists at Amgueddfa Cymru have been grabbing headlines as fourteen new trees were identified – and a mysterious slug.

Our botanists, in conjunction with scientists from Bristol University, Exeter University, Oxford University and the Royal Botanic Gardens, Kew, have named fourteen new kinds of tree in Wales, England and Ireland, all of which are rare and need protection. Of the fourteen finds named officially in *Watsonia*, the scientific journal of the Botanical Society of the British Isles, six occur in Wales.

Some of these trees have probably developed recently and are examples of ongoing evolution; others are older types that have been known for some time but can only be described as 'species' now thanks to modern DNA methods.

The type specimens of the trees are held in the Welsh National Herbarium at National Museum Cardiff, and three of the Welsh species – Stirton's Whitebeam, Motley's Whitebeam and Welsh Whitebeam – can be seen growing at the National Botanic Garden of Wales. This project was led by Amgueddfa Cymru, and the work was supported by The Leverhulme Foundation, the Countryside Council for Wales, Natural England and the Royal Botanic Gardens, Kew.

Biologists at National Museum Cardiff and Cardiff University were amazed when a member of the public showed them specimens of a very different looking slug. Its relatives are usually found in Turkey and Georgia, but it has since been found in gardens throughout south Wales

When scientists realised it was a new, undescribed species with no scientific name, they decided to call the creature *Selenochlamys ysbryda* – Ghost slug – partly from the Welsh word *ysbryd* which means ghost.



Every year, the International Institute for Species Exploration announces an annual list of the Top 10 New Species around the World and Wales's very own Ghost Slug was on the list for 2008!



Oriel y Parc – a new gallery dedicated to the environment

➤ Oriel y Parc in St Davids is the result of a partnership between Amgueddfa Cymru and the Pembrokeshire Coast National Park. It provides a home for artist Graham Sutherland's works inspired by the Pembrokeshire landscape, which in turn inspire a wider programme of exhibitions and activities. The venture offers a unique combination of local visitor information with fresh opportunities to learn about the landscape and what it means to us.

The building itself received BREEAM 'excellent' awards in each of its phases. A grass roof covers a sunken wing containing galleries, providing a level of insulation and security that minimises power usage. Timber from renewable sources provides the structure. The toilets use rainwater collected from the roof through hoppers.

The first year has seen an exhibition on the theme 'the hidden landscape'. Artefacts ranging from the Solva Trilobite to the Tregwynt Hoard can be seen alongside works of art from the 17th century to the present day. Sutherland's studio is featured alongside a group of his works and works by artists he knew and admired. The exhibition programme will be renewed annually.

➤ Exhibitions and events

We are committed to providing high-quality heritage destinations, which are bustling with activities to suit visitors of all ages. Over 1.5 million people visit our museums each year – and we'd like to see even more come through our doors! We give people affordable, inspiring and uplifting things to do and places to go, either on their own or with their families and friends, which can help improve their quality of life. By providing valuable thinking spaces, we also give people the opportunity to challenge their minds and express themselves creatively.





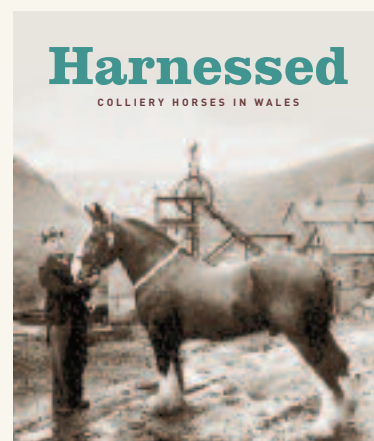
Big Pit's quarter century of visitors

➤ In April 2008 Big Pit celebrated 25 years as one of Wales's top heritage attractions. And just to prove it, May 2009 saw Big Pit welcome its 3 millionth visitor – a pupil from Tŷ Newydd Primary School in Newbridge.

Peter Walker, Keeper of Big Pit and the Mine Manager, said: 'When Big Pit opened no-one believed how soon this industry would more or less disappear, and we are proud to help keep the stories of miners and their families alive. We have been through difficult times but in the last ten years we have had a multi-million pound redevelopment, been named the UK's favourite museum and had our Pithead Baths voted Wales's favourite national treasure.

The 25th anniversary was marked on 5 and 6 April 2008 with a whole weekend of celebrations for the local community. Activities included displays, talks, live music and even a competition to 'Create Big Pit's Anniversary Cheese'!

The weekend was also an opportunity to launch the latest title from National Museum Wales Books – *Harnessed: colliery horses in Wales*. The book responds to some of our visitors' most frequent questions, by taking an in-depth look at life, work and death for these fascinating animals. It includes vivid recollections from miners who remember working underground with the horses.

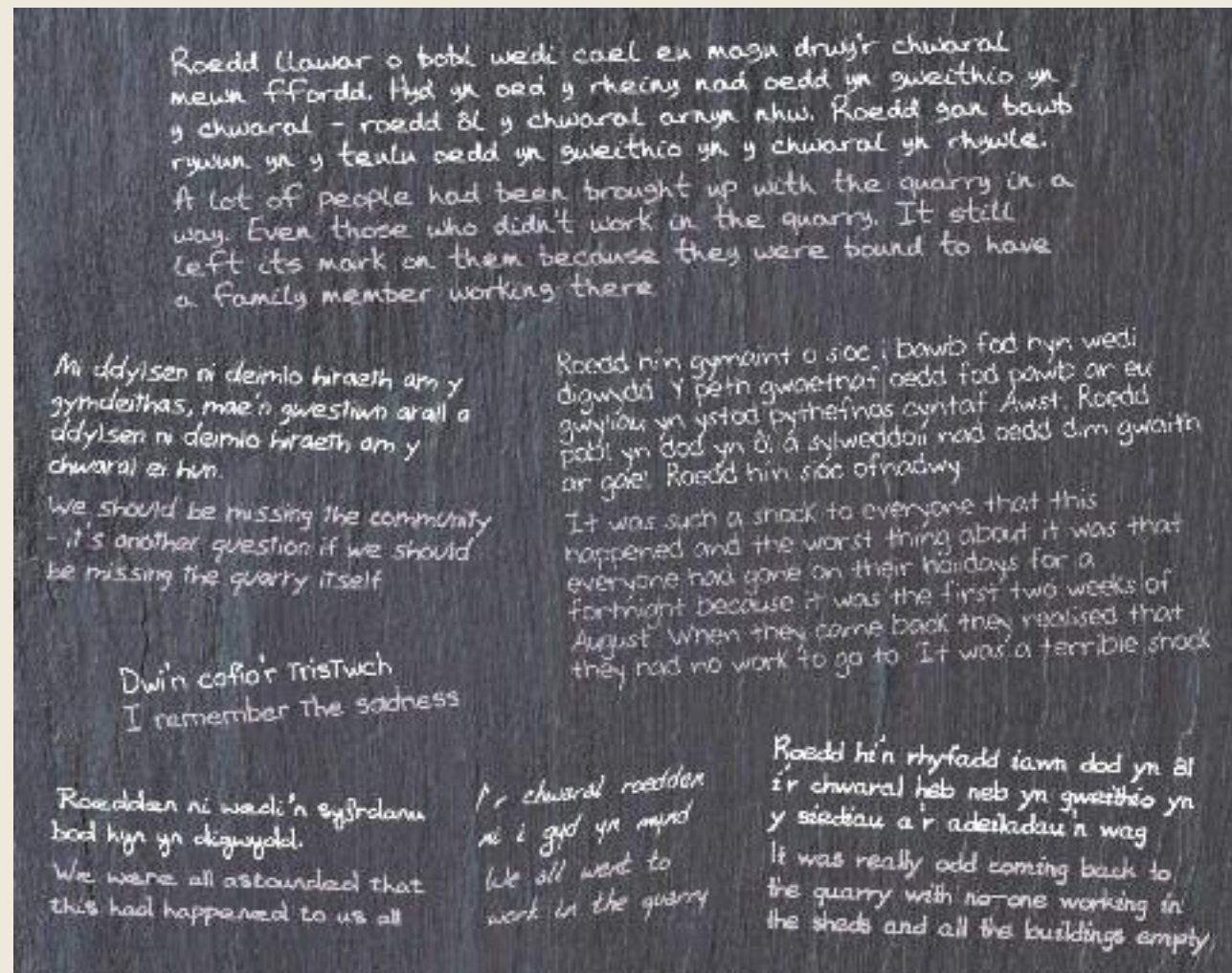


Ceri Thompson, Curator of Coal and an ex-miner, says: 'The miners might have felt sympathy for the horses, but they could turn a blind eye to any cruelty, or even be cruel themselves ... the ultimate fate of many of these four-legged mineworkers was as dog food, but the industrial revolution would have failed without them.'



'Big Pit has remained so successful because visitors get to meet real miners and hear stories first hand about what life was like in the mining valleys'

Peter Walker, Keeper of Big Pit



End of the line

➤ A new exhibition at the National Slate Museum commemorates the 40 years since the closure of Dinorwig slate quarry in 1969.

Dinorwig '69 - the end of the line, which opened on 1 July 2009, reflects on the closure of the quarry and its effect on the village of Llanberis and surrounding communities. Not only did 350 men lose their jobs, but a quarrying community and a way of life that had existed since the 1780s changed forever.



'We will be trying to put the closure into context,' explained Dr Dafydd Roberts, Keeper of the National Slate Museum. 'This is not a celebration, but a reflection on this historic event and a chance to look more closely at the impact the closure had on the community.'

'A century earlier, closure would have been inconceivable. Along with its neighbour Penrhyn Quarry in Bethesda, Dinorwig produced more roofing slates in a year than all other combined slate mines and quarries worldwide. The strange silence that came to Dinorwig in August 1969 had a profound and long-lasting effect on this area.'

At its peak Dinorwig was producing **90,000** tons of roofing slate a year

Creating an Indian Goddess

➤ From March to April 2009 a unique project took place at St Fagans. Over a period of weeks, an Indian goddess was created in front of our eyes.

The project 'Creating Durga' involved two renowned Indian artists, Purnendu Dey and Dibyendu Dey, coming to Wales and creating sculptures of the Hindu goddess Durga and her family of gods.

The artists were in residence for three weeks, as they built the sculpture from a simple wooden frame to a highly decorative finished representation of the goddess. Clay, hay, wood and papier-mâché were used to create a masterpiece that played an important part in Hindu celebrations later in the year.

In all over **1,300** people took part in the programme of events and activities

A whole variety of events took place around the project ranging from talks and workshops to a blog and presence of Flickr, and a final celebratory event at the end of the project.

The project was commissioned and funded by Amgueddfa Cymru, the Arts Council of Wales, the Wales Puja Committee and the Principality Building Society.



Darwin and Wales

➤ This year marks the bicentenary of Charles Darwin's birth, and Amgueddfa Cymru is joining in the international celebrations.

The exhibition *Darwin: a revolutionary scientist*, a joint initiative with the Open University in Wales, explores the remarkable life, voyages and discoveries of the 'father of biology'. It shows the animal and plant species he would have encountered on his journey around the world, as well as modern-day developments such as DNA and inheritance through genes – which support Darwin's theory.

The exhibition also looks at Darwin's time in Wales, where he first became familiar with the foundations of geology. Darwin visited and studied the natural history of north Wales many times. In 1831 he visited north Wales with Professor Adam Sedgwick, one of the most renowned geologists of the time. The knowledge he gained from the professor proved to be invaluable during his voyage around the world on the *Beagle*.

It was a letter from the young Welsh scientist Alfred Russell Wallace that prompted the revolutionary publication of *On the Origins of Species*

Everywhere in Chains

➤ To mark the 200th anniversary of the British Parliamentary abolition of the slave trade, in 2007 the National Waterfront Museum developed the project Everywhere in Chains, examining the role played by Wales in slavery and the continuing fight against it.

The first stage of the project was an exhibition at the Museum. This was followed by a touring version of the exhibition, which was seen by thousands of people at museums, libraries and record offices throughout Wales. The exhibitions highlighted the role that Wales had played in the Atlantic slave trade, and were accompanied by a programme of lectures, workshops and performances.

Stage two was set up as a community-led, open forum, offering participants from different cultural backgrounds a chance to voice their opinions, thoughts and ideas about African enslavement, and to explore how the legacies still affect us all.

There were over one hundred participants, from countries including Nigeria, Uganda, Algeria, Ghana, Lebanon, Morocco, Trinidad and Tobago, St Kitts and Nevis, France, Russia, Iran, Iraq, Afghanistan, Palestine, Cambodia, Wales, England and Ireland, all of whom now live in Cardiff, Newport or Swansea. The project also forged partnerships with over thirty different community organizations.



The National Library of Wales, Bangor University and Glamorgan Record Office worked with us on the exhibitions. The Everywhere in Chains Community Project was funded by the Heritage Lottery Fund and supported by a large number of people and organizations throughout Wales and beyond, including the National Library of Wales, the University of Bangor, Swansea Museum and Newport Museum.



Festival of British Archaeology

➤ Three of Amgueddfa Cymru’s Museums – St Fagans, the National Roman Legion Museum and National Museum Cardiff – took part in the Festival of British Archaeology over the summer. A number of events were held to showcase the important archaeological work undertaken by Amgueddfa Cymru, in the form of re-enactments and talks explaining how unearthed objects reveal stories from the past. A Roman funeral was held, the Celtic Village was brought to life and visitors got to meet characters who would have lived in some of our communities 2,000 years ago!

Urdd Gobaith Cymru

➤ To complement the fact that the Urdd Eisteddfod was this year held in Cardiff, Amgueddfa Cymru has been working in partnership with the Urdd to deliver a number of events and activities. Oriel 1 in St Fagans housed a temporary exhibition which looked at the history of the Urdd as an organization and the Urdd’s annual message of peace and goodwill, which is available in 36 languages, was broadcast from the site. We also hosted the Urdd’s annual large jamboree, which saw 4,000 primary school pupils from every corner of Wales visiting St Fagans for the two-day event.

Turning heads

➤ Fashion and textiles graduates at Coleg Sir Gâr's West Wales School of the Arts returned to the National Wool Museum in June to hold their end-of-year fashion finale. The catwalk show marked the end of their studies as they unveiled over 72 designs that had been individually researched, designed and created for the show and put on the catwalk using professional models.

Ann Whittall, Manager of the National Wool Museum, said: 'We're pleased to welcome the students back. It's fitting that a catwalk show of contemporary fashion is held here in a building with such a history of fashion creation.'

Music 09

➤ At the beginning of 2009, Amgueddfa Cymru launched a music-themed programme of events and exhibitions. One element – Respond – has seen artists working with curators from our seven museums to produce a musical response to the nation’s collections. Some of Wales’s emerging musical talents are submitting original tracks inspired by various exhibitions, displays and objects.

Amgueddfa Cymru hopes this will be the first of many engaging projects that will broaden the appeal of the collections and the museums as social spaces.



22 original pieces of music have been composed as part of the Respond project



Diane Arbus

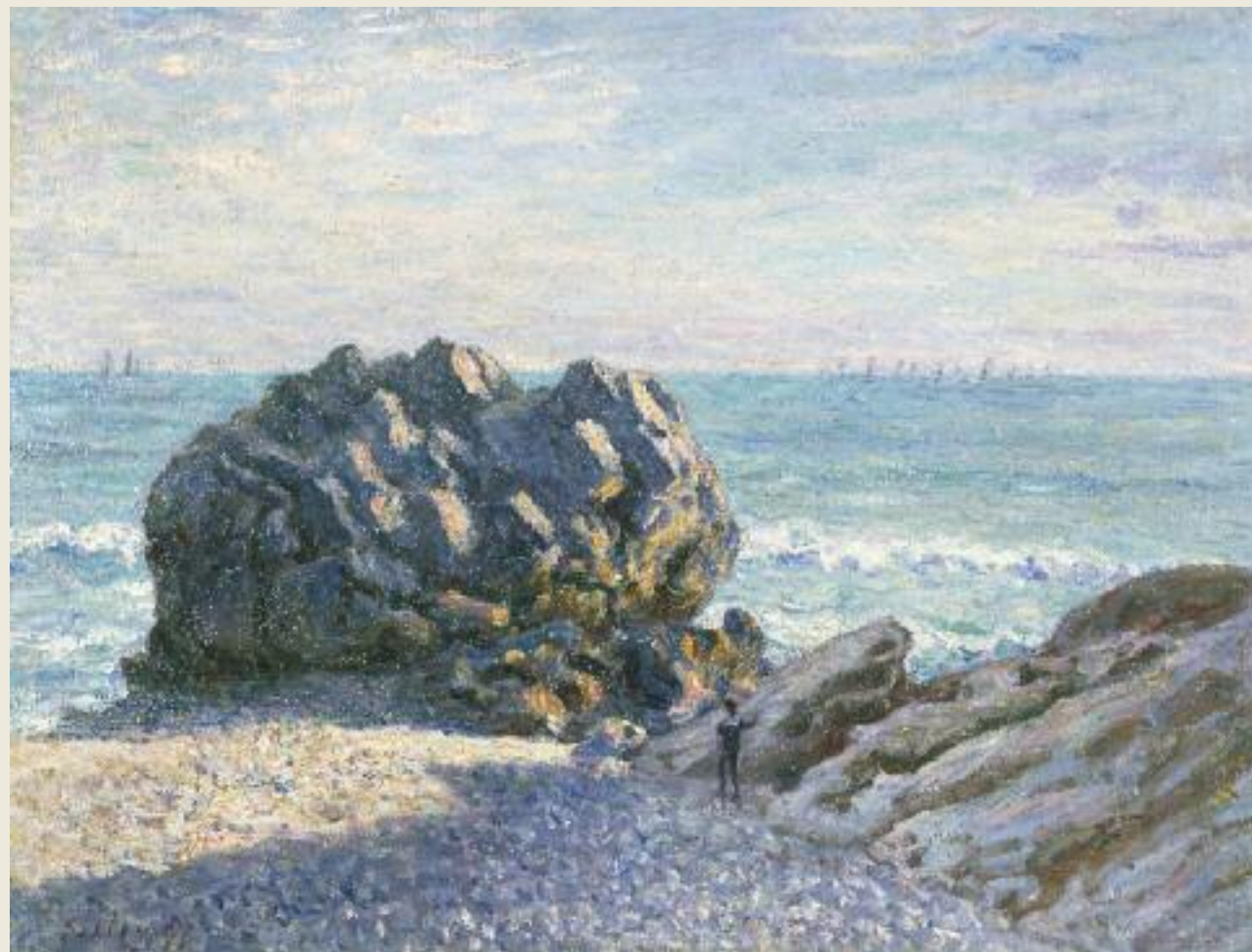
➤ One of National Museum Cardiff's main art exhibitions in 2009 revealed the work of legendary New York photographer Diane Arbus (1923-1971), who transformed the art of photography.

Diane Arbus, which comprises 69 black and white photographs including the rare and important portfolio of ten vintage prints *Box of Ten*, 1971, is one of the best collections of Arbus's work in existence. Her powerful, sometimes controversial images often frame the familiar as strange and the strange or exotic as familiar. A large selection of these images were on display, and proved to be an extremely popular attraction.

Sisley in England and Wales

➤ Visitors to National Museum Cardiff were treated to a wealth of Alfred Sisley's treasures in spring 2009. The exhibition – *Sisley in England and Wales* – was organized by Amgueddfa Cymru and The National Gallery, London and focused on Sisley's two painting campaigns in the UK – in England in 1874 and Wales in 1897. This exhibition brought the result of these two visits together for the first time – revealing Sisley at two of the most creative moments of his life.

The exhibition featured the artist's only surviving seascapes which were painted in Wales. Works range from those that capture the shimmering effects of light on the calm sea of the Bristol Channel at Penarth, to bold depictions of the mighty rocks at Langland Bay, in particular the massive outcrop known as Storr's Rock.



© 1971 The Estate of Diane Arbus

'A photograph is a secret about a secret. The more it tells you, the less you know.'

Diane Arbus



➤ Enhancing the experience

Though budgets are under huge constraints in this economic climate, Amgueddfa Cymru continues to look towards the future. Current developments at National Museum Cardiff and exciting plans to develop St Fagans as the National History Museum for Wales will undoubtedly improve the visitor experience. Both these developments will be our major projects over the coming years – but all of our museums will continue to work at enhancing the visitor's experience.

Refreshing Wales – a new national museum of art

➤ By 2011, as a result of a £4.15m investment, we will have completely transformed the first floor of National Museum Cardiff into Wales's national museum of art. Elements of the project have already been completed and are beginning to demonstrate a fresh new approach to the presentation of the art of Wales, exploring Welsh cultural identity in an international context.

A new national museum of natural science

In 2010 we will begin refurbishment and redisplay of the ground floor of National Museum Cardiff as the National Museum of Natural History. The hugely popular and successful Glanely Discovery Gallery will be refurbished and improved in line with the expectations of existing and future users who have been consulted on the changes.

Towards a flagship national gallery for Wales

The new national museum of art described above is the first phase of the longer-term development of a national gallery for Wales. There has been much debate in Wales over the last decade about the display of art in Wales. A report on the issue, commissioned by the Welsh Assembly Government, was published in December 2008.

Its recommendation is to build a new north wing at National Museum Cardiff, to display the natural science collections. This will allow the whole of the existing building to become the national art gallery.

The report indicates that such a project would take 10-15 years and substantial funding to complete. This timescale means that we can continue with current work, including the redevelopment of St Fagans (see over), before work begins on the new north wing.



St Fagans in the future

➤ Our innovative plans to transform St Fagans into Wales's national history museum will ensure that, for the first time, Wales will have a 'one-stop shop' for Welsh history.

At St Fagans, we are used to delivering firsts: when it opened in 1948 it was the UK's first open-air museum and the first national museum devoted to exploring the everyday lives of ordinary people.

However, the original infrastructure of the site now needs renewing, and this will be the first phase of this £20m project. We will build on the existing strengths, as well as ensuring that future visitors will be able to enjoy the stories of the people and places of Wales from the earliest times to the present day. This will entail moving the archaeological collections from their current location in National Museum Cardiff to join the social history collections at St Fagans.

As well as being a centre for knowledge and traditional skills within the wider network of heritage sites across Wales, St Fagans will be a gateway that directs visitors to other cultural attractions. Ultimately, it will show visitors from across the world that Wales is a confident, diverse and forward-looking nation.

Over the coming years, we will be looking to ensure that we have financial support to enable us to deliver this project for the people of Wales.

St Fagans is the most popular heritage visitor attraction in Wales, with over **600,000** visits each year

A Roman garden

➤ In September 2008, a new Roman-style garden was officially opened to the public at the National Roman Legion Museum, and visitors now have a literally 'living' insight into the lives of the Romans who lived in Isca – today's Caerleon.

Thanks to archaeological evidence and research, the garden reveals that we still commonly use gardening techniques that were established 2,000 years ago. The Romans turned soil in the autumn to mix compost, and hoed beds and sowed seeds in spring. Their triclinium is today's gazebo. They also introduced several plant species to the UK, which are familiar to us by now.

The garden provides a fresh new backdrop for the many activities that already take place at the Museum for people of all ages.

Exploring our Woodlands

➤ In spring 2008 a new way to explore and enjoy the woodlands at St Fagans was launched. The project Exploring our Woodlands aims to encourage people to engage with the environment by using the extensive woodlands at St Fagans. The project encompasses workshops, activities, a nature trail and a dedicated website complete with 'wildcams'.

Visitors can now enjoy a specially designed nature trail, either by attending arranged events or by using the specially developed new woodland trail. The trail has plenty of activities and guidance to help visitors look out for and identify woodland creatures and plants, from the most familiar to the truly elusive.

The Exploring our Woodlands project is funded by Legal & General and Cardiff County Council through the Landfill Communities Trust.



8,541 visitors took part in Exploring our Woodlands activities
September 08-
September 09

> Amgueddfa Cymru makes headlines in the USA

COLUMBIA, SC.- Eight weeks into the exhibition, *Turner to Cézanne: masterpieces from the Davies collection, National Museum Wales*, the Columbia Museum of Art has surpassed 20,000 tickets for visitors and members. The show opened at the Columbia Museum of Art on March 6 -- the first time these works have been seen in the United States -- and closes in five weeks on Sunday, June 7. To date, more than 3,400 children in elementary, middle and high school from around the state have visited the exhibition for which the Museum has kept school group prices low to give students an opportunity to see this world-class exhibition.



Fine art collection of two prescient Welsh sisters set to dazzle small cities in US

One hundred years ago, the face of the world was changing drastically, with new industries, technology, and forms of transportation and communication emerging. How did two spinster sisters from a village in rural Wales respond to all of this social upheaval? Gifted with a vast inheritance from their industrialist grandfather, Gwendoline and Margaret Davies began to collect art – not just any art, but the most progressive French paintings of the day. Their legacy, bequeathed to National Museum Wales, now composes one of the finest Impressionist art collections in Europe. For the next year, 53 highlights will tour the US, opening March 6 at the Columbia Museum of Art in Columbia, S.C.

By Carol Strickland / Contributor to The Christian Science Monitor / March 6, 2009 edition

In six weeks, Everson Museum of Art will open its doors to the major traveling exhibition “Turner to Cezanne: Masterpieces From the Davies Collection, National Museum Wales.”

To accommodate visitors, Everson will extend its hours during the exhibition. The museum will be open noon to 6pm Tuesdays and Wednesdays; noon to 9pm Thursdays and Fridays; and 9am to 6pm Saturdays and Sundays. Private tours also can be scheduled. For more information, call 474-6064. Art lovers can purchase tickets now for the show, which runs Oct. 9 to Jan. 3, 2010. Sales are being accepted three ways: For online, go to the museum's Web site, www.everson.org. Click the "tickets" button on the home page. By phone with a credit card, call 474-6064 from 9am to 5pm. Monday through Friday. In person, visit the gift shop at the museum, 401 Harrison St. Tuesday through Sunday.

Columbia Museum of Art in Columbia, SC, Closes Blockbuster Exhibit With Record Attendance

Well, we just received a press release from the Columbia Museum of Art about their impressive attendance numbers posted during their presentation of the exhibit, *Turner to Cézanne: Masterpieces from the Davies Collection, National Museum Wales*, which was on view from March 6 through June 7 - 3 months. The release stated that the exhibition ended the first stop of its nationwide tour by attracting over 46,000 people to the Columbia Museum of Art for gallery tours, programs and events. That's a blockbuster in this state ... it's not like people were not hearing good things from the people who visited the exhibit, the Museum broke a single-day attendance record with 1,590 visitors on the last Friday of the exhibition, June 5, 2009. If anything the buzz about this exhibit was building.

Carolina Arts / Saturday, June 13th, 2009

Oklahoma City, OK - The Oklahoma City Museum of Art is pleased to announce the presentation of *Turner to Cézanne: Masterpieces from the Davies Collection, National Museum Wales*, opening June 25 through September 20, 2009.

A selection of 47 paintings - many of which have been rarely exhibited outside of Wales - and 11 important works on paper will reveal the cross-currents between artists and movements that propelled nineteenth-century painting from the romantic naturalism of J.M.W. Turner to the post-impressionism of Paul Cézanne. The works on view are drawn from the collection of Gwendoline and Margaret Davies, Welsh sisters who were among the most important art patrons in Europe at a key moment in the history of painting. The exhibition includes eight works by Turner, five by Jean-François Millet, three each by Camille Corot and Claude Monet, and two each by Cézanne, Edouard Manet, and Pierre-Auguste Renoir.

Art collection might inspire new generations

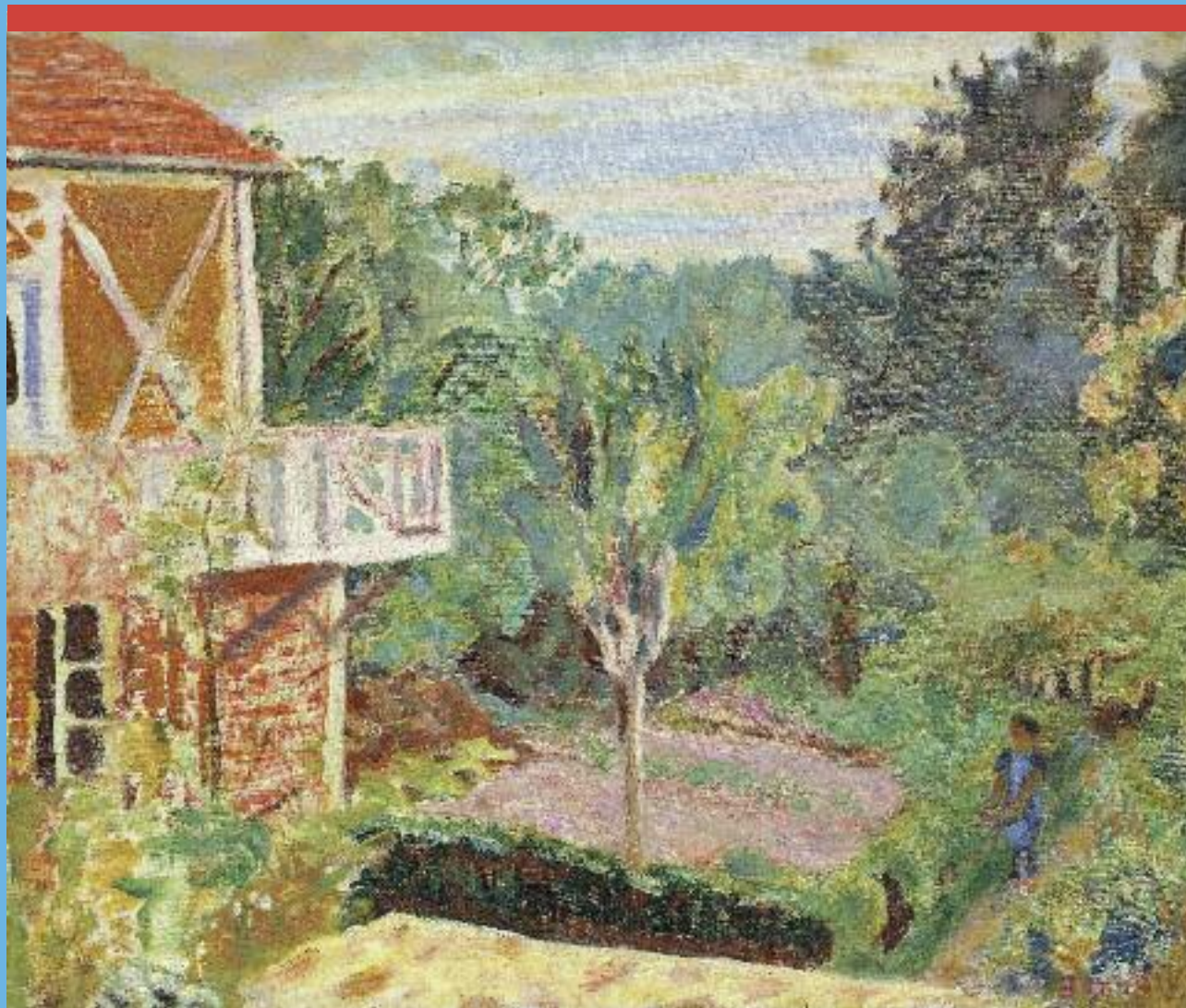
Hemingway wrote of how he often would walk to the Jardin du Luxembourg and then enter the Musée du Luxembourg where he would view the paintings of Paul Cézanne that were on display there ... It is possible that the paintings of Cézanne that are on display at the Oklahoma City Museum of Art will have a similar impact on an aspiring Oklahoma author. Those two works are part of a display from the National Museum of Wales in the United Kingdom that is titled “From Turner to Cézanne, Masterpieces from the Davies Collection” and will be at the Oklahoma City Museum of Art until Sept. 20 of this year. The Davies collection was amassed by two sisters, Gwendoline and Margaret Davies, who were heirs to an industrial fortune in Wales and began to purchase art in the early 20th Century. Their collection was later donated to the National Museum of Wales.

William F. O'Brien / The Edmond Sun

Alun Ffred Jones, Welsh Assembly Government Minister for Heritage, said ‘These paintings will not only put Wales on the map at an international level, but will inspire, entertain and educate millions in the future. This exciting and powerful exhibition will capture the public imagination and will tell one of the greatest stories ever told by Wales. I am hopeful that having highlights from our national collections on display further afield will have a direct impact on Wales as well as the tourism industry.’

➤ Wales and beyond

Promoting culture in Wales and beyond is at the heart of all of Amgueddfa Cymru's work. We are striving to maximise inclusive access for all groups in society to our museums and collections, as well as promoting Welsh culture on a national and international level.



Committed to Welsh heritage

- Amgueddfa Cymru offers superb opportunities for Welsh learners to improve their skills. Tutors of Welsh to adults can use the free web-based resource packs Llwybrau Llafar and Perthyn to take their students around St Fagans, Gwau Geiriau around the National Wool Museum or Camau Cymraeg to do the same at the National Slate Museum. All the packs follow the same principle: as tutors take their students around a museum, they can use carefully structured exercises and activities, all based on the objects and displays they will encounter. The packs are based on a groundbreaking scheme, uniquely combining structured learning with museum visits, with the emphasis always on encouraging learners to engage with their surroundings and use their Welsh.

The packs, which were developed in association with the Assembly Government's Department for Children, Education and Lifelong Learning, are all available – completely free of charge – on our website, at www.amgueddfacymru.ac.uk/learning.

Amgueddfa Cymru has also been developing Welsh-language events for families. The National Waterfront Museum has been working with Menter Iaith Abertawe (Swansea's Welsh language development body) and Twf (the organization that promotes bilingualism from birth) to develop a number of family-friendly initiatives for Welsh learners.

Each month in the Taith Iaith sessions a Welsh-speaking member of staff introduces one of the many themes in the Museum's displays. This is followed by an opportunity to socialise and to practice new words over a cup of tea.

Canu Gyda Babi sessions use popular rhymes and nursery songs as a way for all the family to absorb the language. Over sixty babies attended the first session, and an average of twenty-five children still attend each session. Parents also receive song sheets to take home, so there's plenty of opportunity to practice!

Amgueddfa Cymru is also proud of the work we do beyond Wales in order to promote the nation’s collections, heritage and culture. We want to ensure that Wales is promoted on the international stage as a destination for art lovers and cultural tourists – something which is increasingly important during a time of recession.

The Smithsonian Folk Life Festival 2009

➤ Amgueddfa Cymru was one of the major partners in the delivery of the Wales presence at the Smithsonian Folk Life Festival in Washington, DC. Many of our staff took part, providing demonstrations – such as slate splitting – as well as contributing to talks and debates. We also worked on many other collaboratives, especially from the fields of social history, creative industries and creative practices from story telling to installation and video art.



A dynamic Wales was showcased in the heart of the American capital, and it certainly helped in terms of raising Wales’s profile in the USA. Amgueddfa Cymru will work with the Welsh Assembly Government to build on the links made in order to encourage greater inward investment and tourism to Wales in the future. We believe Welsh culture and heritage deserves to be acknowledged on the international stage, and we are keen to take this message to even more audiences in the future.

From Turner to Cézanne

➤ Complementing our involvement at the Smithsonian is the tour of our Impressionist collection around the USA. The exhibition *Turner to Cézanne: Masterpieces from the Davies Collection* travels to five different venues over a period of eighteen months. In March 2009, it opened at the Columbia Museum of Art before moving on to Oklahoma City Museum of Art, the Everson Museum of Art in Syracuse, New York, the Corcoran Gallery of Art in Washington, DC and Albuquerque Museum in New Mexico.

Opening with an introductory group of works by JMW Turner, the exhibition provides a fascinating and deeply personal vision of French painting from the Realists to the Post-Impressionists, and finishes with a small section on avant-garde British art immediately prior to the First World War.

The works are from the two defining bequests of the Welsh sisters Gwendoline and Margaret Davies. They were avid collectors of art, and assembled a collection ranging from the Old Masters to contemporary British artists. The exhibition features 58 oil paintings and watercolours, some of which have never been seen in the USA before.

➤ Your national museums



Don’t just visit – take part.

Get involved

Ever watched the film *Night at the Museum* and thought to yourself – I’d like a look at what goes on behind the scenes? If so, why not consider becoming a Volunteer at one of our sites? There are four different ways for you to get involved:

- Volunteering** – for adults aged over 18. Roles are available on a short or long-term basis.
- Work Experience** – for school students aged 15-18.
- Work Placements and Internships** – for higher education students aged 18 and over. Placements can be part of a formal course of study.
- Apprenticeships** – we are always seeking funding to extend this scheme so we can take on more apprentices in traditional crafts and skills to learn on the job.

You’ll learn new skills, share specialist knowledge, further your passion for a particular subject, meet new people and gain valuable experience while having fun along the way. For more information contact Siân Layton, Volunteer Co-ordinator, at siân.layton@museumwales.ac.uk or on (029) 20573393.

Tell us what you think

We want to hear from you. We want to ensure that people from all over Wales have the opportunity to have their say and get involved through consultation work. If you’re interested in participating in our consultation work please contact Elaine Cabuts, Museum Secretary, at elaine.cabuts@museumwales.ac.uk or on (029) 20573204.

Support us

If you can support any of the projects, programmes or events at any of our museums please contact the Development Department at development@museumwales.ac.uk or on (029) 20573184. Any donation you can make will make a big difference to our work.

Amgueddfa Cymru – National Museum Wales
would like to extend our appreciation and thanks
to all the following supporters.

Corporate Support Corus Legal & General Principality Building Society Western Power Distribution	Mr and Mrs R. A. Forster Nigel and Jane Gibbs Christopher Gridley Jo Hirst Anita Johansson Captain Sir Norman Lloyd Edwards KCVO Malcolm and Monica Porter R. Paul Russell Anna Southall Roger and Rhian Thomas	Ian and Julia Kelsall Miss Pat Kernick Mr Gerry Long MBE and Mrs Pat Long L. Hefin Looker Paul and Lynne Loveluck Julian Mitchell John and Doreen Morgan Peter Morgan Richard and Rose Morgan Peter and Maria Neumark Mr John Phillips Michael and Sian Phipps Mathew and Lucy Prichard Anthony and Mary Pugh The Rt Hon. the Lord Raglan Bernard and Valerie Rees Robert and Elaina Powell Dr Colin J. Richards and Mrs Ann Richards John Roberts Mike and Mary Salter Richard and Gaynor Smart Dr P. M. Smith John Sorotos Geraint Talfan Davies Bev Thomas MBE Ken and Fran Truman David Vaughan CBE QC David and Christine Vokes Haydn and Dorothy Walters Dr Jane Watkeys Mrs Meriel Watkins John and Hilary Weber Richard Weston and Linda Prosper Mr and Mrs I. T. Wigley Dr D. M. J. and Dr M. V. Williams Ruth and Gareth Williams Dr W. B. Willott CB Viscount Windsor Derek and Joan Woolley
All donors to the Museum of Art Appeal		
All those who endowed seats in the Oakdale Workmen’s Institute at St Fagans: National History Museum	Patrons & Individual Donors Five anonymous Patrons One anonymous donor Mrs E. M. Austin Gordon Scott Bagnall Lawrence Banks Leslie Beckett Peter Bennett-Jones Dafydd Bowen Lewis Mrs D. H. R. Brackstone William Burgess David and Carole Burnett Dan Clayton-Jones Esq. Dr Sarah Cockbill Mrs Valerie Courage Robert and Rhian Croydon Margaret Davies Walter and Shael Dickie Eleri Ebenezer Robert Edward Gerard and Elisabeth Elias Mrs Wynne Evans Mrs Christine Eynon Roger and Kathy Farrance John and Genevieve Foster Thomas Pearl E. Gayther Jonathan Gray Christopher Gridley Michael and Jill Griffith Peter and Lynne Groom Sir Richard Hanbury-Tenison KCVO Alan and Judith Hart G. Wyn Howells MBE Afanwen James Jane Jenkins Anne and Hywel Jones Terry Jones	
All those who remembered Amgueddfa Cymru by leaving a legacy		
Trusts, foundations and other major supporters Clore Duffield Foundation Colwinston Charitable Trust Corus Community Union Derek Williams Trust Esmée Fairbairn European Social Fund Friends of Amgueddfa Cymru – National Museum Wales The G C Gibson Charitable Settlement Heritage Lottery Fund		
Lead Patron The Rt Hon. the Earl of Plymouth		
Life Patrons 1 Anonymous Life Patron Dr Margaret Berwyn Jones Enid Child Nicholas and Diana De Courcy-Ireland Dr Margaret Elmes Marion Evans Sigi and Wynford Evans		In memory of Patrons who sadly passed away during the year The Rt Hon. the Lord Rees QC