

Have Fun: Archaeology Galleries

Animals & People

- Start in the Medieval Gallery.

1. Find a jug shaped like a stag. **What was this used for?**

- Next, find an area full of stone crosses.

2. Find a pair of animals on one of them.

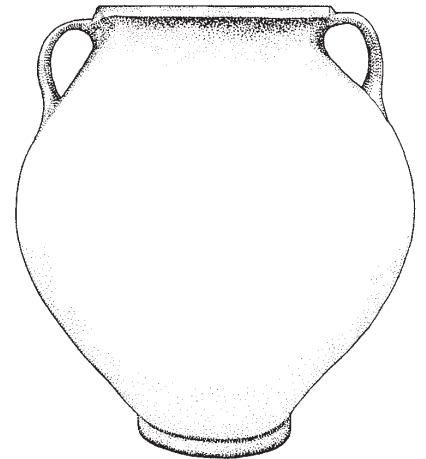
Draw their shapes.

- Walk back in time to find a case full of small Roman objects.

3. Can you see any animals here? We still keep these as pets. _____

- Look around the cases on this level.

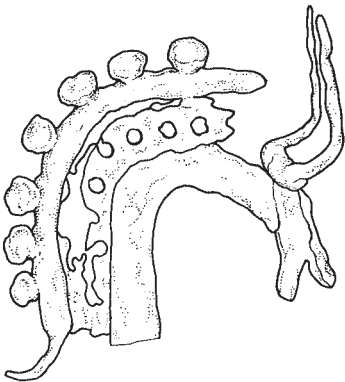
4. Find a jar with a face on it. **We've drawn the jar, fill in the rest.**

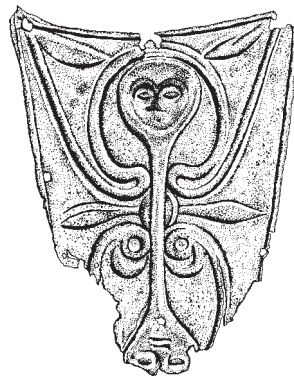


- Up the stairs and back in time again.

We're in the Iron Age now, at a time when people we often call the Celts lived in Wales. See how many images of animals you can find on the things they left behind.

- 5. Look for these objects. **Write down some words to describe them.**







- 6. We've now made it as far back as the Bronze Age. **How long ago was this?**

- It is much harder to find things that people left behind the further back in time we go. We have to look extra hard at the clues they leave us about how they lived and what animals they knew about.

- 7. Look at the set of footprints and imagine you've just walked down a muddy track or across a sandy beach. What would your footprints look like if they were discovered by archaeologists thousands of years in the future?

Draw your tracks here.



- 8. Walk to the back of the gallery. Look for an animal that was known to people living in the ice age. **Write its name here.**

- 9. Returning to more modern times, go into the Coin Gallery and look at all the different types of coin on display. **How many types of animal can you see here? Circle them.**

Horse

Sheep

Elephant

Lion

Wren

Stag

Turtle

Owl

Eagle

- **Draw some of your favourites.**

